

2101 11295 Pazarena Place, Maple Ridge

\$679,900



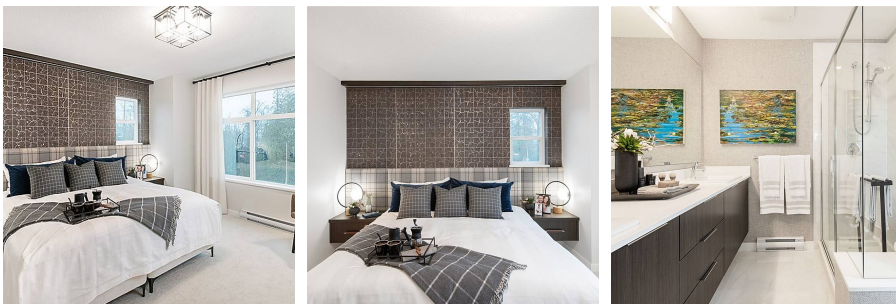
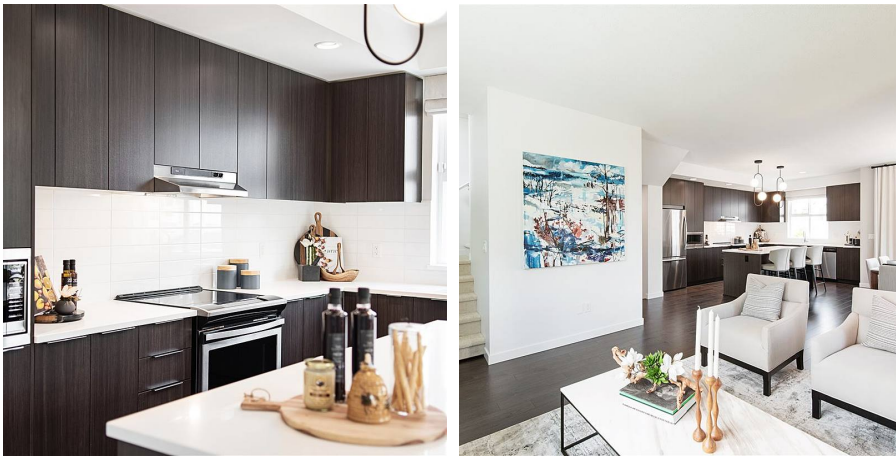
BY ADVANCE APPOINTMENT ONLY. 4 BEDROOM Parkside CORNER HOME with SIDE-BY-SIDE GARAGE. Designed for growing families in mind, discover Provenance by Polygon. This corner brand new 4 bedroom, 2.5 bathroom townhome boasts a bright open space, and a side-by-side garage. On the main level, appreciate the generous kitchen island, stainless steel appliances, and powder room. Upstairs, rejuvenate in the master bedroom's spa-inspired ensuite bathroom, offering dual sinks and walk-in shower with integrated bench seating.

KEY INFORMATION

MLS® R2531062
Residential Attached
East Central Maple Ridge
4 Bedrooms
3 Bathrooms
1,518 SF

FEATURES

Year Built: 2021
Listed By: rennie & associates realty ltd.



Dal Milin PREC*
778.881.9021
dmilin@rennie.com
rennie.com/dalmilin

rennie