

10404 Parkwood Drive, Rosedale

\$844,900



Country setting with scenic mountains views!
LARGE .27 acre lot!! This beautiful 2700 sqft 2Storey w/bsmnt home is situated at the end of cul-de-sac on a wide tree lined street. Family can walk in peace or ride bikes to the cute park just down the street. Inside is just as fantastic. 4 Baths, 5 bdrms (3up, MASTER ON MAIN, 1 in the basement) gives lots of possibilities for home office space, growing family, guest rooms or somewhere for the in-laws. SS appliances & NEW d/w, w/d, h/w tank and water softener! Other features include A/C, security, vaulted ceiling in living room, and lots of parking! Basement (no separate entry from outside) has rough-in plumbing and electrical for an in-law area if needed. QUALITY built with excellent finishings, come take a look!

KEY INFORMATION

MLS® R2532579

Residential Detached

BC

5 Bedrooms

4 Bathrooms

2,706 SF

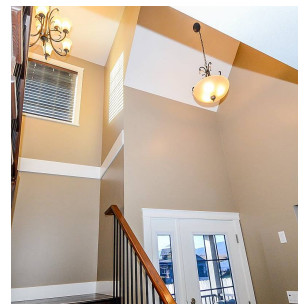
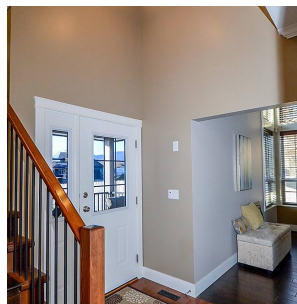
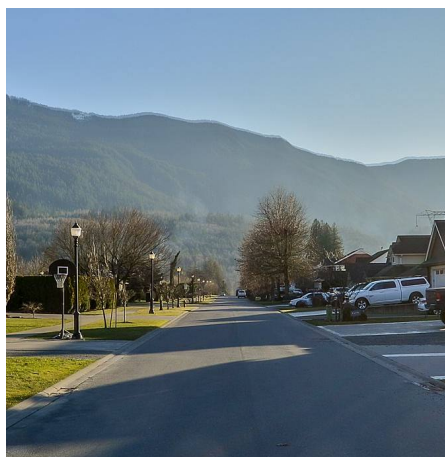
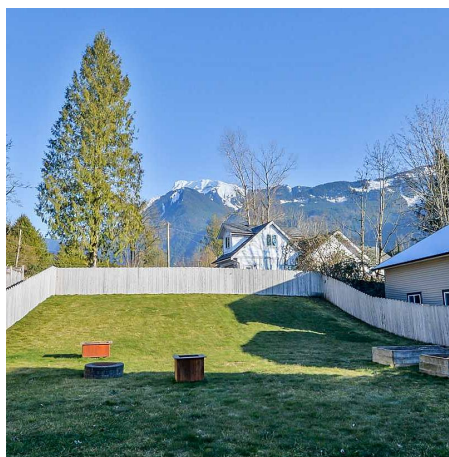
11,840 SF Lot

FEATURES

Year Built: 2010

Views: MOUNTAINS

Listed By: rennie & associates realty ltd.



Clarke Mallory PREC*
604.316.9917
cmallory@rennie.com
rennie.com/clarkemallory

rennie