

12 3483 Ross Drive, Vancouver

\$3,288,800



Rare concrete family townhomes on Vancouver's West Side! The Residences at Nobel Park by Polygon is a collection of parkside homes at UBC's award-winning Wesbrook Village. Surrounded by green spaces, large playgrounds and a treed greenway, this community is steps from a vibrant village square and a stone's throw from some of Canada's best public and private education institutions at every level. This corner townhome offers upgraded brand name kitchen appliances including a 36" refrigerator and a wine fridge, spacious living/dining, a 5-piece ensuite and a roof deck. Book an appointment today to visit the stylish community and display homes; sales office is located at 20 - 3483 Ross Drive.

KEY INFORMATION

MLS® R2532906

Residential Attached

University

4 Bedrooms

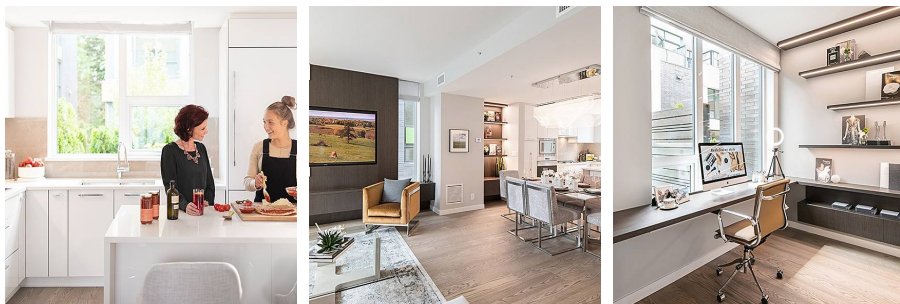
4 Bathrooms

2,392 SF

FEATURES

Year Built: 2020

Listed By: Polygon Realty Limited



rennie