

804 530 Whiting Way, Coquitlam

\$699,000



Exceptionally well-kept 2 bed + 2 bath corner unit at the highly desirable Brookmere by Onni! This northeast facing home features an extremely functional, efficient & open layout with a large & bright living/dining area, gorgeous chef's kitchen with high-end S/S appliances & plenty of cabinet/storage space, master bdrm comes with a walk-in closet & heated floor ensuite, over-height ceilings, quartz counters, a large deck for relaxing & your BBQ & one of the best exposures with gorgeous mountain & treetop views! Fantastic 14,000 sq ft amenity center that includes kids center, garden space, exercise facility, media room, yoga room, games room, party room, business center & guest suite. Super convenient location, just steps away from Lougheed Skytrain Station, Lougheed Mall + so much more!

KEY INFORMATION

MLS® R2533381

Residential Attached

Coquitlam West

2 Bedrooms

2 Bathrooms

870 SF

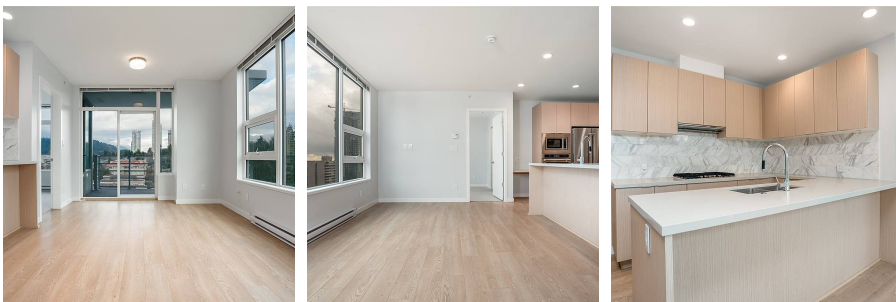
\$344.50 Maintenance Fees

FEATURES

Year Built: 2019

Views: CITY AND MOUNTAIN

Listed By: rennie & associates realty ltd.



Gwendalen Chan
778.388.0913
gchan@rennie.com
rennie.com/gwendalenchan



Ryan Wong PREC*
604.551.7966
rwong@rennie.com
rennie.com/ryanwong

rennie