

# 7045 Ridge Drive, Burnaby

\$1,499,000



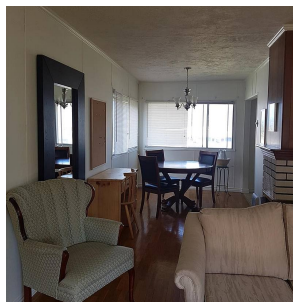
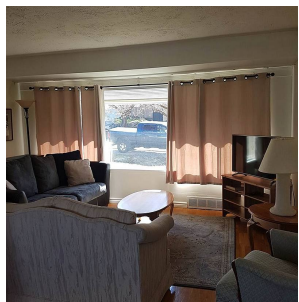
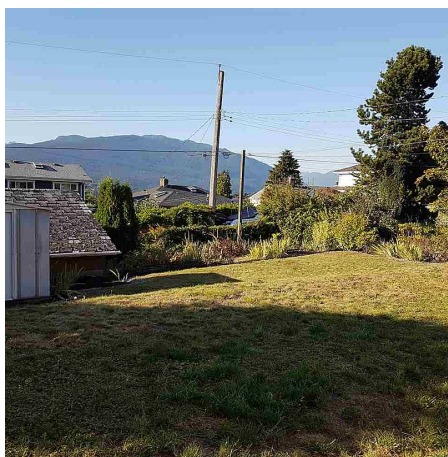
Excellent opportunity to build your dream home in this prime Burnaby North neighbourhood. Enjoy amazing views of Burrard Inlet & mountains on this 7200 sq ft lot with lane access. Conveniently located close to schools, shopping, transit, parks, Burnaby Mountain Golf Course & SFU.

## KEY INFORMATION

MLS® R2535558  
Residential Detached  
Westridge  
4 Bedrooms  
1 Bathroom  
1,805 SF  
7,200 SF Lot

## FEATURES

Year Built: 1950  
Views: WATER & MOUNTAIN  
Listed By: rennie & associates realty ltd.



**Salina Kai** PREC\*  
604.773.7013  
skai@rennie.com  
rennie.com/salinakai



**Danny Chow** PREC\*  
604.765.2469  
dchow@rennie.com  
rennie.com/dannychow

**rennie**