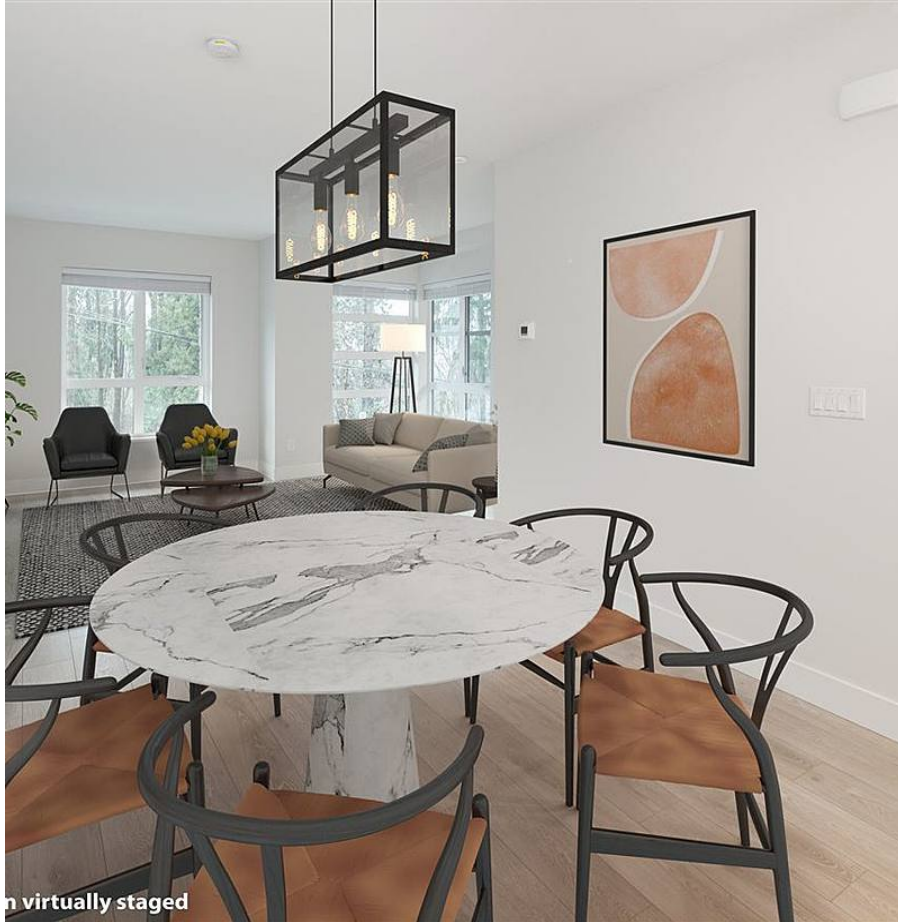


# 670 Seaview Drive, Port Moody

\$1,089,900



Welcome to CEDAR BRIDGE! A collection of 28 high quality townhomes in Port Moody. This spacious corner 1,800 SF 3 bdrm home is filled with space & light. Open concept dining & living on the main level & a sunny walkout patio w/gas outlet makes this home stand out in design & function. The kitchen features full size appliances with gas range & a huge island - a perfect breakfast counter. Main level also offers a tucked-away powder room for ultimate convenience. Large entrance on the ground floor plus a den with window, great for office or flex space. 3 bedrooms upstairs with a spacious walk-in closet in the master & ensuite bathroom with nu-heat floor, full stand up shower & double vanities. TWO CAR TANDEM GARAGE with tons of storage & high efficiency tankless HW!

## KEY INFORMATION

MLS® R2535694

Residential Attached

College Park

3 Bedrooms

3 Bathrooms

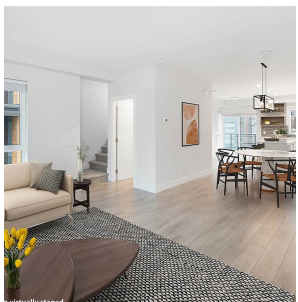
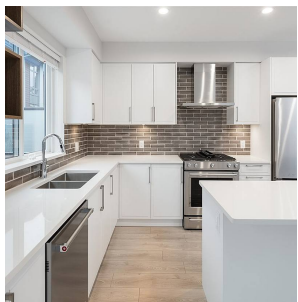
1,807 SF

## FEATURES

Year Built: 2020

Views: MOUNTAIN VIEW ON UPPER FLOOR

Listed By: rennie & associates realty ltd.



**Jenna Van Alstine**  
778.558.3355  
jvanalstine@rennie.com  
rennie.com/jennavalstine



**Natalie Genest** PREC\*  
604.928.7330  
ngenest@rennie.com  
rennie.com/nataliegenest

**rennie**