

# 102 2140 W 12th Avenue, Vancouver

\$459,000



Great opportunity, Kitsilano Studio along the popular Arbutus Walk. Garden level unit with private street entrance and outdoor patio space. Excellent location with 95 walk score, close to Arbutus and Broadway shops and restaurants. North-facing exposure with open floorplan from front to back. Upgraded countertops, flooring, and kitchen appliances. Built-in Murphy bed for easy conversion between bedroom and living room. One parking stall, one storage locker, and in-suite laundry. Well maintained building with low strata fees. Great INVESTMENT opportunity with upcoming ARBUTUS station. Showings by appointment only

## KEY INFORMATION

MLS® R2536479

Residential Attached

Kitsilano

0 Bedrooms

1 Bathroom

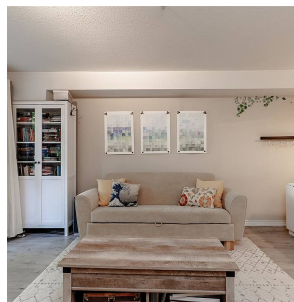
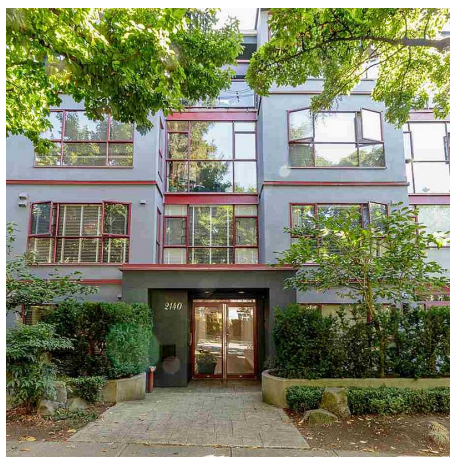
509 SF

\$196.37 Maintenance Fees

## FEATURES

Year Built: 1995

Listed By: rennie & associates realty ltd.



**Daniel O'Hearn** PREC\*  
778.384.2665  
dohearn@rennie.com  
rennie.com/danielohearn

**rennie**