

1001 489 Interurban Way, Vancouver

\$589,000



Enjoy all the conveniences of living in the Cambie + Marine neighbourhood of Vancouver in the residences at the Marine Gateway complex. This 1-bedroom plus flex condo has 567 square feet of living space, and features an open island kitchen, and balcony with view. Located next to the Marine Gateway Complex, the home is close to plenty of restaurants, cafes, a cinema, and many amenities nearby. Enjoy a meal at Pink Elephant Thai, Dublin Crossing, or Freshii. Get your groceries downstairs at T&T Supermarket, or Superstore nearby. For public transit, regular buses serve stops along Marine Drive and the Marine Drive Skytrain station is steps away for convenient access to Downtown Vancouver, YVR and the rest of the city. Includes 1 Parking Spot.

KEY INFORMATION

MLS® R2537602

Residential Attached

Marpole

1 Bedroom

1 Bathroom

567 SF

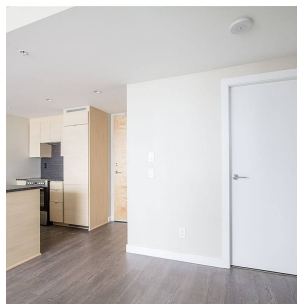
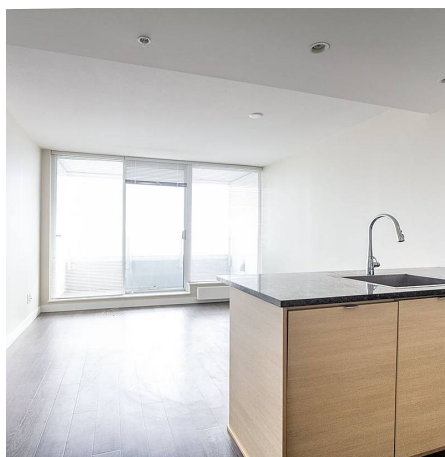
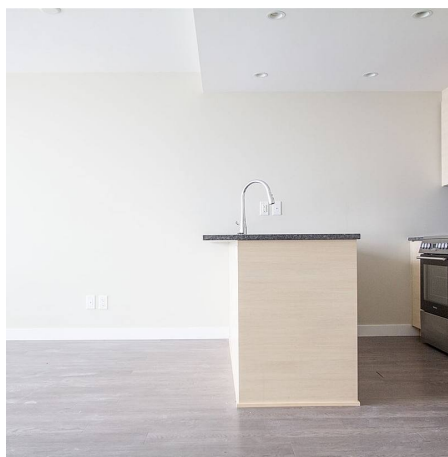
\$309.19 Maintenance Fees

FEATURES

Year Built: 2015

Views: City

Listed By: rennie & associates realty ltd.



Vivien Ma PREC*
604.828.2268
vma@rennie.com
rennie.com/vivienma

rennie