

102 2245 Twin Creek Place, West Vancouver

\$3,180,000



Nestled high on the South facing slopes of Hollyburn Mountain in prestigious British Properties, is an exclusive enclave of ultra-luxury homes. "The Properties" by Quigg. This very private community has 44 residences in total, contained in 7 small scale 4 storey solid concrete buildings. This spacious 3218 sq ft. 3 bedrooms 4 bathrooms townhome features south facing panoramic views from every room. This townhouse has one of the largest beautiful private south facing garden in the complex with gorgeous ocean and city views, plus entertainment sized patios and decks, gourmet kitchen featuring the finest quality appliances and fixtures, media room, den and private attached 2 car garage. This is truly one of the best townhouse you will ever find! Easy to show!

KEY INFORMATION

MLS® R2538890

Residential Attached

Whitby Estates

3 Bedrooms

4 Bathrooms

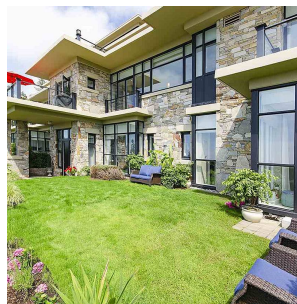
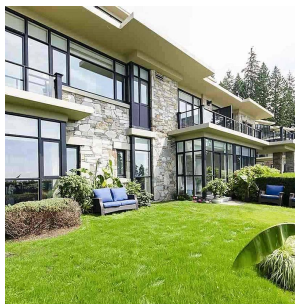
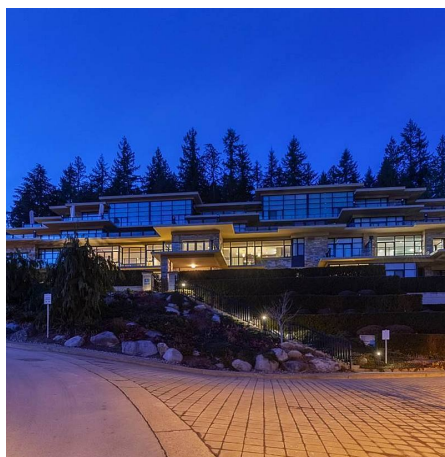
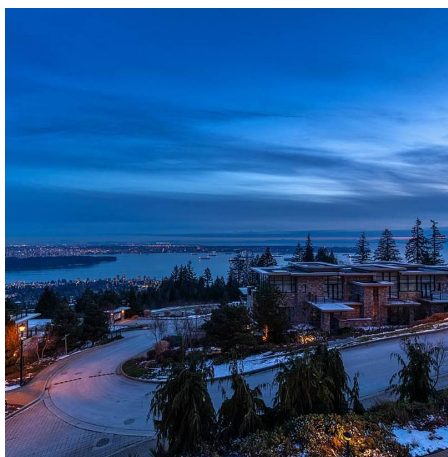
3,218 SF

FEATURES

Year Built: 2006

Views: Panoramic Ocean & City View

Listed By: rennie & associates realty ltd.



Mike Ross
778.987.8874
mross@rennie.com
rennie.com/mikeros

rennie