

3609 6588 Nelson Avenue, Burnaby

\$868,000



The Met built by Concord Pacific that has been the Gold Standard for master plan communities. MET is the most high end luxury concrete high rise building in the core of Downtown Metrotown. Excellent location, door steps to Bonsor Park & Recreation, Loblely Park, public transit(eg. skytrain station) Superstore, TNT Market and Metrotown Shopping Centre. Large 2 bed + 2 bath suite, NE corner unit, quite side of the building, overlook deer lark, garden and mountain. Unbeatable amenities including full time concierge, indoor pool & hot tub, steam & sauna, gym, karaoke room, 2 lane bowling alley, indoor golf simulator, outdoor putting green, outdoor lawn bowling, party room & lounge, games & billiards room, & dance room. Great rental income opportunities potential \$2600/month for a bedroom unit.

KEY INFORMATION

MLS® R2541640

Residential Attached

Metrotown

2 Bedrooms

2 Bathrooms

818 SF

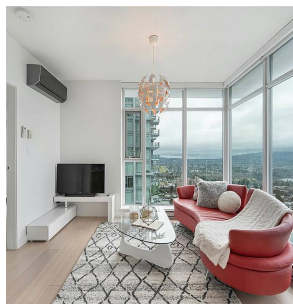
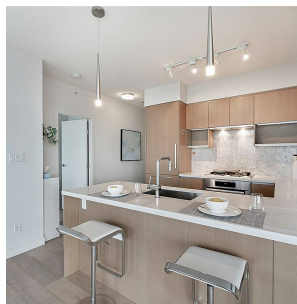
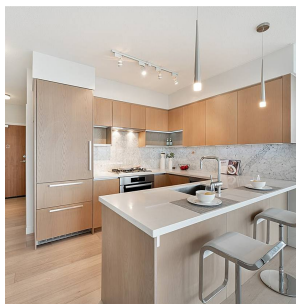
\$293.52 Maintenance Fees

FEATURES

Year Built: 2015

Views: MOUNTAIN VIEW

Listed By: rennie & associates realty ltd.



Tony Liang PREC*
604.781.9988
tliang@rennie.com
rennie.com/tonyliang

rennie