

229 9333 Tomicki Avenue, Richmond

\$699,900



Inspired by European Architectural Design Omega built by Concord Pacific. Wonderful 2 bed 2 bath over 917sqft of interior space, perfect layout to maximum living space, 2 parking stall, airy 9 foot ceiling height, timeless color scheme, open kitchen, open balconies to enjoy indoor and outdoor living experience, central heating and cooling system create comfortable cozy life, stackable front load washer and dryer. Walking distance to Walmart, school, Garden City Shopping Plaza and community park. Amazing clubhouse/amenities for entertaining. March 20 Sat, 2-4 showing by appointment only! parking 156, 157 showing by appointment.

KEY INFORMATION

MLS® R2541719

Residential Attached

West Cambie

2 Bedrooms

2 Bathrooms

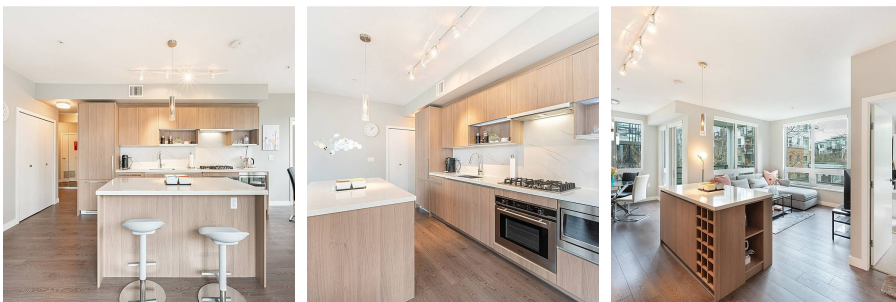
917 SF

\$456.67 Maintenance Fees

FEATURES

Year Built: 2014

Listed By: rennie & associates realty ltd.



Tony Liang PREC*
604.781.9988
tliang@rennie.com
rennie.com/tonyliang

rennie