

2635 E 43rd Avenue, Vancouver

\$1,099,000



AVALON MEWS IN KILLARNEY AREA - 3 BEDROOM + 2.5 BATH TOWNHOME - Features include: open concept kitchen with shaker cabinetry, quartz countertops, large kitchen island, stainless steel appliances, laminate floors and high ceilings on main. Amenity room for birthday parties & family gatherings, outdoor common landscaped green space and child's play area. Just minutes to: Killarney Market and Champlain Mall, Killarney Community Centre, Fraserview Golf Course, Nanaimo and Joyce-Collingwood Skytrain Station and many nearby parks and schools. 1 Parking and 1 Storage Locker.

KEY INFORMATION

MLS® R2544083

Residential Attached

Killarney

3 Bedrooms

3 Bathrooms

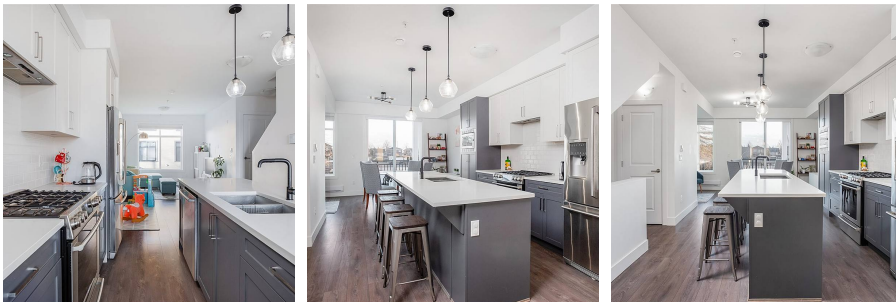
1,357 SF



FEATURES

Year Built: 2018

Listed By: rennie & associates realty ltd.



Calvin Kan PREC*
604.616.8373
ckan@rennie.com
rennie.com/calvinkan

rennie