

12104 250 Street, Maple Ridge

\$1,098,800



Outstanding Open concept contemporary 3 Bed & 3 Bath beautifully renovated home. This almost 10,000 sqft lot is located in a peaceful private area yet close to schools/shopping/transit. Low maintenance hardwood floors in living room w/ gas fireplace & reclaimed mantle. Huge master with large walk-in closet and make up area w/ ensuite. Upstairs you have another 2 bdrms with lounge area. You'll love the chef inspired gourmet kitchen, great for entertaining. Corian counters, new appliances, beautiful eating area & all with easy access to a covered year round patio with gas table & BBQ. New composite decking surround all leading to an alarmed 36x26 detached heated shop with 1 Asymmetric car hoist & 4 Post hoist. Attention car enthusiasts! Parking for 10 cars plus RV parking lots of options.

KEY INFORMATION

MLS® R2544763

Residential Detached

Websters Corners

3 Bedrooms

3 Bathrooms

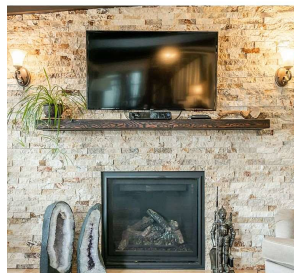
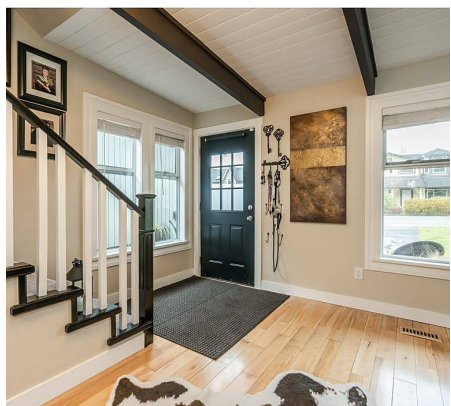
2,061 SF

9,887 SF Lot

FEATURES

Year Built: 1960

Listed By: rennie & associates realty ltd.



Randy Rinaldo PREC*
604.781.4995
rrinaldo@rennie.com
rennie.com/randyrinaldo

rennie