

# 16 6577 Southdowne Place, Chilliwack

\$664,900



Walking distance to all levels of schools. Come view this beautiful 2206 sqft townhome in the heart of Sardis park, tucked away but close to it all! Pride of ownership w/this beautiful 4 bdrm 4 bath town home. Lot of room for your family. Bright & open from the moment you enter, fresh paint, lots of big windows in this end unit. You'll notice the modern white subway back splash & new counters in the kitchen, dining area has glass doors leading out to your full fenced back yard, w/gate & additional street parking. Spacious living rm has gas f/p, main floor has beautiful laminate throughout. Upstairs are 3 big bdrm & laundry, master has a walk-in shower & huge vanity. Basement is a great kid hang out space w/full bath & 4th bdrm. Your dbl garage & driveway will hold 2 vehicles-even a truck!

## KEY INFORMATION

MLS® R2546355

Residential Attached

Chilliwack

4 Bedrooms

4 Bathrooms

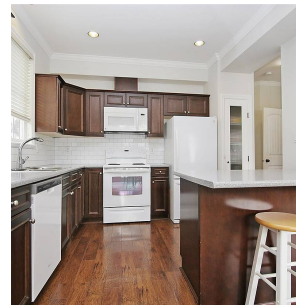
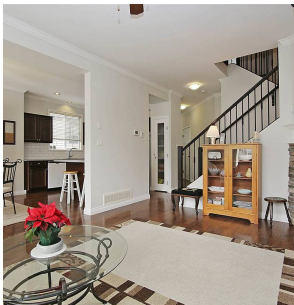
2,206 SF

## FEATURES

Year Built: 2007

Views: mountains

Listed By: rennie & associates realty ltd.



**Clarke Mallory** PREC\*  
604.316.9917  
cmallory@rennie.com  
rennie.com/clarkemallory

**rennie**