

205 350 E 2nd Avenue, Vancouver

\$599,900



Here's your chance to live in a "tres chic" Live/Work/Studio in the MainSpace Building located in friendly, popular Mount Pleasant that is close to everything including Skytrain (and one block from the new line soon to start), Emily Carr Campus, VCC, Main Street shopping, Olympic Village, bike paths and so much more! In home features include floor to ceiling south facing windows, a very cool kitchen with black tile backsplash, granite countertops, eating bar, quartz vanity in the W/C, a rare private balcony, one parking and a shared rooftop patio with killer views. Definitely a gem and one you need to consider if you are looking for this kind of unusual and innovative space to live in and work in - it's the perfect COVID home :-)

KEY INFORMATION

MLS® R2549336

Residential Attached

Mount Pleasant

0 Bedrooms

1 Bathroom

727 SF

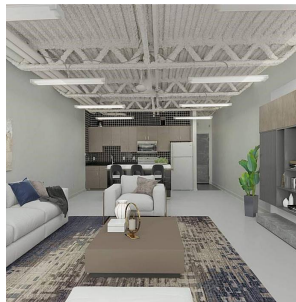
\$310.69 Maintenance Fees

FEATURES

Year Built: 1995

Views: Brewery Creek Park

Listed By: rennie & associates realty ltd.



Daniel O'Hearn PREC*
778.384.2665
dohearn@rennie.com
rennie.com/danielohearn

rennie