

1029 8988 Patterson Road, Richmond

\$948,000



Rare south facing 2 bedrooms, 3 bath unit at "Concord Garden Park Estate" by Concord Pacific. Bright and open concept floor plan with zero wasted space. This over 1000 sqft unit features hardwood floors throughout, custom crown moldings, floor to ceiling windows, fully equipped kitchen with stainless appliances and large island, granite countertops, central A/C. This unit overlooks a 70,000 sq ft garden and city view. 1 parking+ 1 storage locker (Seller paid approx \$5000). The Diamond clubhouse offers over 18,000 sqft of resort-style amenities, including gym, indoor pool, sauna, steam room & hot tub, badminton/ basketball court, bowling alley, movie/ karaoke room, and much more. Extremely convenient location, Yaohan Center, Aberdeen Center and SkyTrain, everything just steps away.

KEY INFORMATION

MLS® R2556188

Residential Attached

West Cambie

2 Bedrooms

3 Bathrooms

1,005 SF

\$629.76 Maintenance Fees

FEATURES

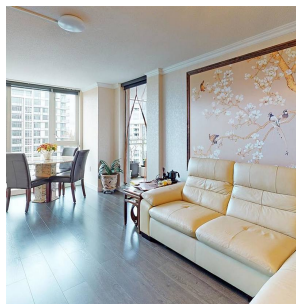
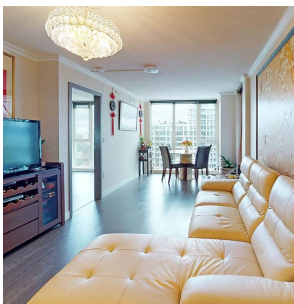
Year Built: 2017

Views: COURTYARD

Listed By: rennie & associates realty ltd.



atterport 3D Walkthrough Tour Available



Ester Hsieh PREC*
778.552.4921
ehsieh@rennie.com
rennie.com/esterhsieh

rennie