

# 1704 567 Clarke Road, Coquitlam

\$755,900



CLARKE  
+ COMO

COQUITLAM'S  
TALLEST TOWER  
boasts over 20,000 SF  
of indoor and outdoor  
amenities and access to  
the Evergreen Line  
Skytrain directly across  
the street.

the intersection  
of life + style  
coming spring.



567 Clarke + Como by MARCON, much anticipated Coquitlam's tallest tower DIRECTLY ACROSS skytrain station is nearing completion late Summer of 2021. North (NW, NE) facing CORNER 2bdrm/2bath home boasts GREAT LAYOUT, spacious and open living room with 9' ceiling and floor to ceiling PANORAMIC WINDOWS to soak in the mountain view. Windows extend to kitchen featuring Bosch 30" Gas cook-top / Fisher & Paykal Fridge / Blomberg W&D. Roller Blinds and 2 Balconies. Amenities including Concierge, Guest Suites, Gym, Sauna, Sports Court and more. Includes 1 parking 1 locker. ASSIGNMENT of CONTRACT - Contact Your Realtor For More Info.

## KEY INFORMATION

MLS® R2556573

Residential Attached

Coquitlam West

2 Bedrooms

2 Bathrooms

888 SF

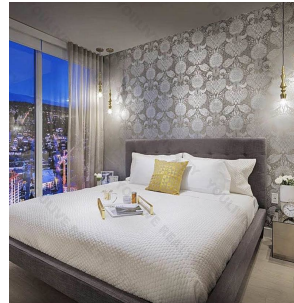
\$337.44 Maintenance Fees

## FEATURES

Year Built: 2021

Views: BURNABY MOUNTAIN

Listed By: rennie & associates realty ltd.



Lily Vong  
604.781.7808  
lvong@rennie.com  
rennie.com/lilyvong

rennie