

1001 2425 Alpha Avenue, Burnaby

\$794,900



Tailor by Marcon located in the heart of Brentwood. Only minutes walking distances to Brentwood Skytrain Station, Brentwood Mall, Whole Foods, Starbucks, major banks, Winners, and only a few minutes drive from Costco, BCIT, SFU, CEFA, Steve Nash, Deer lake park and much more. This stunning corner 2 bedroom home features an airy 9' ceiling, high efficiency heating and air conditioning system, expansive window in the kitchen, Bosch 30' appliances package, full height double pantry, floating vanity motion sensor lighting in ensuite, 1 EV parking & 1 locker included. Premium first-class amenities including fully equipped fitness centre, yoga/stretch room, co-working area, dog run and much more. Completion is estimated to be late 2024. Open by appointment only from Sat to Thurs 12-5pm.

KEY INFORMATION

MLS® R2557622

Residential Attached

Brentwood Park

2 Bedrooms

2 Bathrooms

764 SF

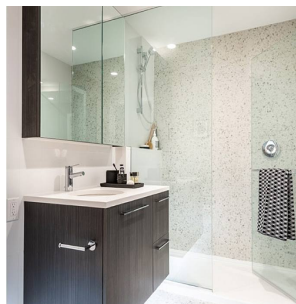
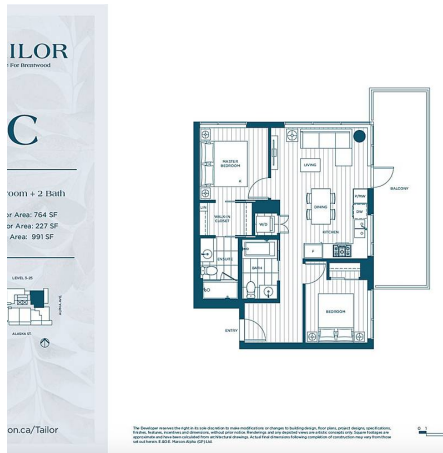
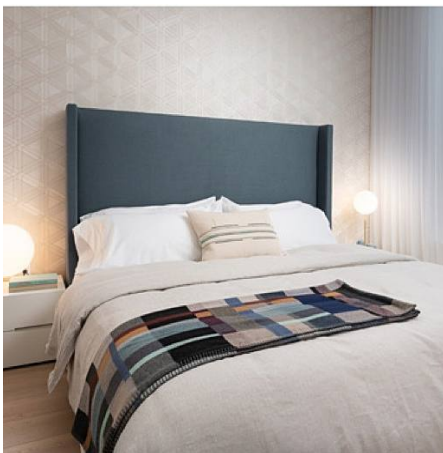
\$445.18 Maintenance Fees

FEATURES

Year Built: 2024

Views: City View

Listed By: rennie & associates realty ltd.



Candice Ko
604.729.7842
cko@rennie.com
rennie.com/candiceko

rennie