

13575 14 Avenue, Surrey

\$1,888,800



Prime location in the heart of Ocean Park, large and rectangular 10,500 sqft lot on the high level of the site, which allows potential ocean view when a new house being built. 2500 sqft spacious rancher with 3 bedrooms and 2 bathrooms. New dishwasher. Walk to the beach, park and bus transit. Very nice tenant want to stay for a long term and keep the property better than owners.

KEY INFORMATION

MLS® R2557290

Residential Detached

Crescent Beach

3 Bedrooms

2 Bathrooms

2,521 SF

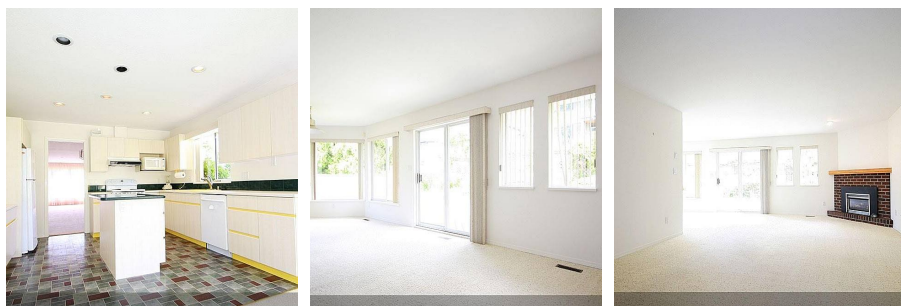
10,527 SF Lot

FEATURES

Year Built: 1990

Views: potential ocean view on built

Listed By: Sutton Group-West Coast Realty (Surrey/24)



rennie