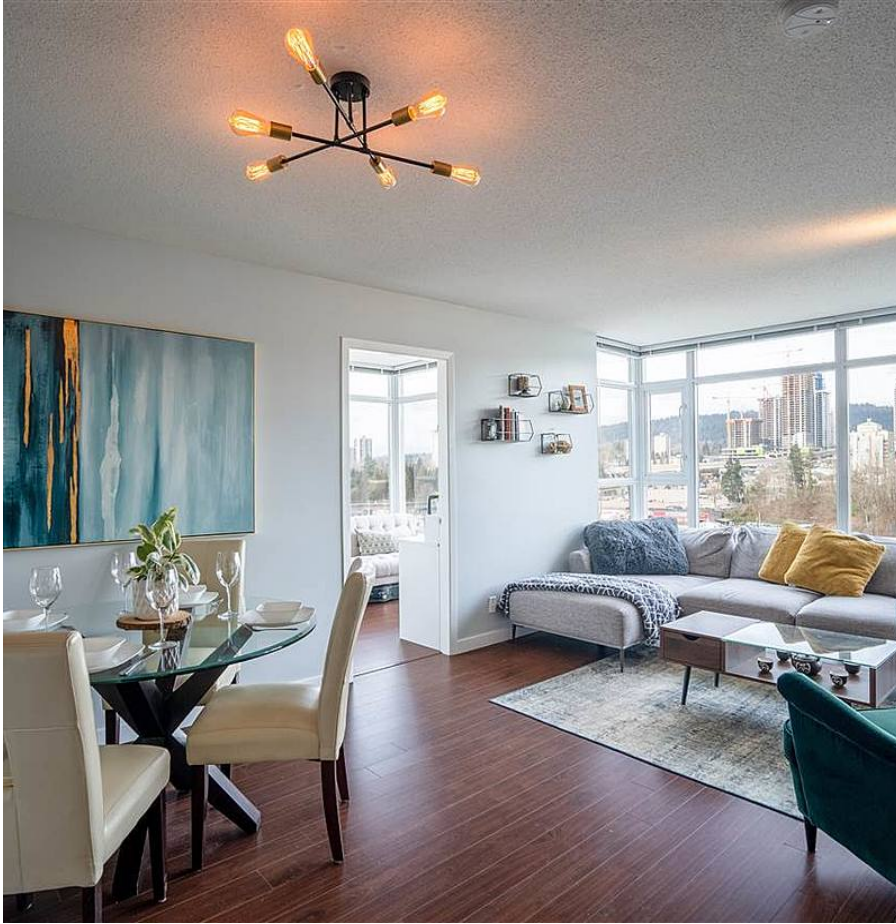


805 555 Delestre Avenue, Coquitlam

\$549,000



Bright NW Facing Corner Unit in Cora Towers by award winning Intergulf! Very desirable Floor plan - Large dining & living area, spacious master bed, lots of privacy between 2nd bedroom, full sized kitchen featuring granite counter-tops & oversized bartop. The floor to ceiling windows fill the home w/ light and provide city & mountain Views. Smart Dual access to both balcony & bathroom. Cora towers is centrally located: Lougheed Mall & Skytrain, Hanin Village Plaza, Walmart, Superstore, ikea + neumerous restaurants & much more. Access to HWY 1 is quick and lougheed is well connected to the rest of the lower mainland. Building features, Gym, Amentity room, outdoor gardens + seating area. The home comes w/ 1 storage & 1 parking. Book your viewing now!

KEY INFORMATION

MLS® R2558975

Residential Attached

Coquitlam West

2 Bedrooms

1 Bathroom

700 SF

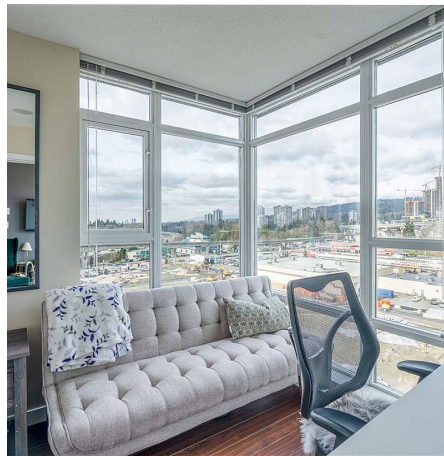
\$246.73 Maintenance Fees

FEATURES

Year Built: 2008

Views: CITY AND MOUNTAINS

Listed By: rennie & associates realty ltd.



Ryan O'Hearn PREC*
778.384.2667
rohearn@rennie.com
rennie.com/ryanohearn



Daniel O'Hearn PREC*
778.384.2665
dohearn@rennie.com
rennie.com/danielohearn

rennie