

901 3315 Cypress Place, West Vancouver

\$2,098,000



Fabulous location with panoramic view of the ocean, city and Lions Gate Bridge at the Stonecliff. This immaculate SE corner suite features open floor plan with approximately 2,000 sq ft of living space, 2 bedrooms plus den and family room, 2 and a half baths fantastic kitchen fitted with stainless steel appliance, gas fireplace, air conditioning and hardwood flooring. This suite comes with secure private parking in a 2 car garage and fantastic recreational facilities which includes clubhouse with lounge, kitchen, exercise room, hot tub and 2 guest suites.

KEY INFORMATION

MLS® R2559344

Residential Attached

Cypress Park Estates

2 Bedrooms

3 Bathrooms

1,958 SF

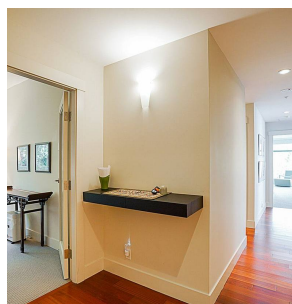
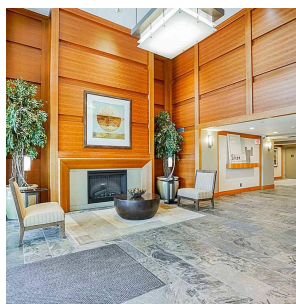
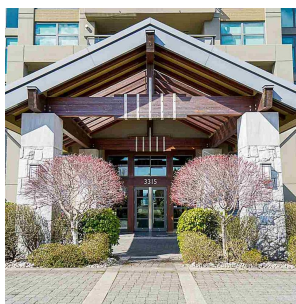
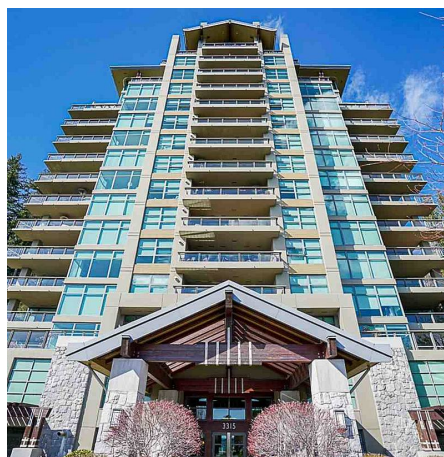
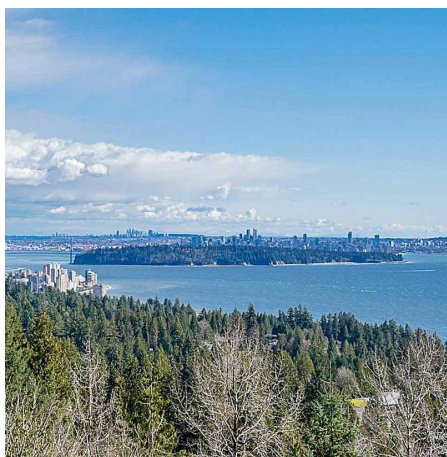
\$916.18 Maintenance Fees

FEATURES

Year Built: 2005

Views: PANORAMIC OCEAN AND CITY VIEW

Listed By: rennie & associates realty ltd.



Jason Soprovich

604.817.8812

jsoprovich@rennie.com

rennie.com/jasonsoprovich

rennie