

2508 5470 Ormidale Street, Vancouver

\$699,900



Highly desirable 2 Bed 2 Bath CORNER LAYOUT on the 25th floor at Wall Centre Central Park Tower 3. Designed to LEED Gold Standards by award winning GBL Architects. PRISTINE unit with floor to ceiling windows and breathtaking DOWNTOWN, CITY, & MOUNTAIN views from every room. Functional NW facing floor-plan with SEPARATE bedrooms and zero wasted space, featuring a beautiful colour scheme with quartz counters, shaker style cabinetry, and cocoa-wood toned laminate flooring. High quality stainless steel appliances with GAS RANGE and in-suite laundry. Amenities include meeting and party rooms, fitness centre, rooftop garden plots, and underground visitor parking. One parking and storage included. Minutes from Central Park, Skytrain, Metrotown, shopping and dining. Viewings by private appointment

KEY INFORMATION

MLS® R2559946

Residential Attached

Collingwood

2 Bedrooms

2 Bathrooms

750 SF

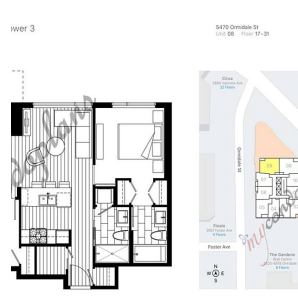
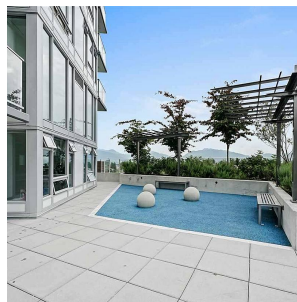
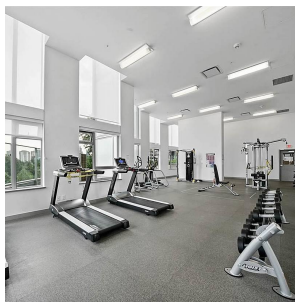
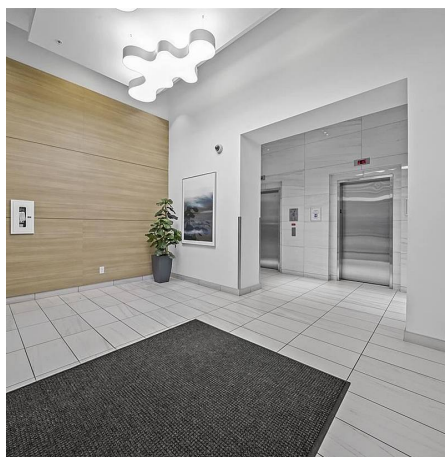
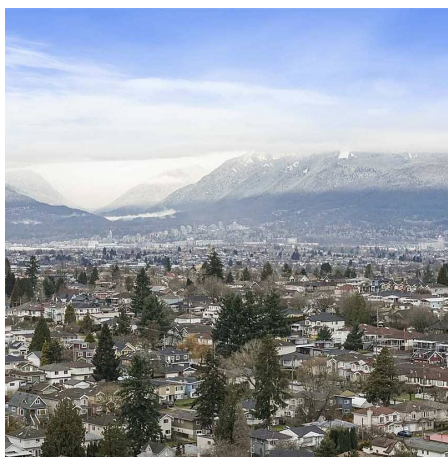
\$379.13 Maintenance Fees

FEATURES

Year Built: 2018

Views: CITY AND MOUNTAIN

Listed By: rennie & associates realty ltd.



Hanson Lu PREC*
604.787.2578
hlu@rennie.com
rennie.com/hansonlu

rennie