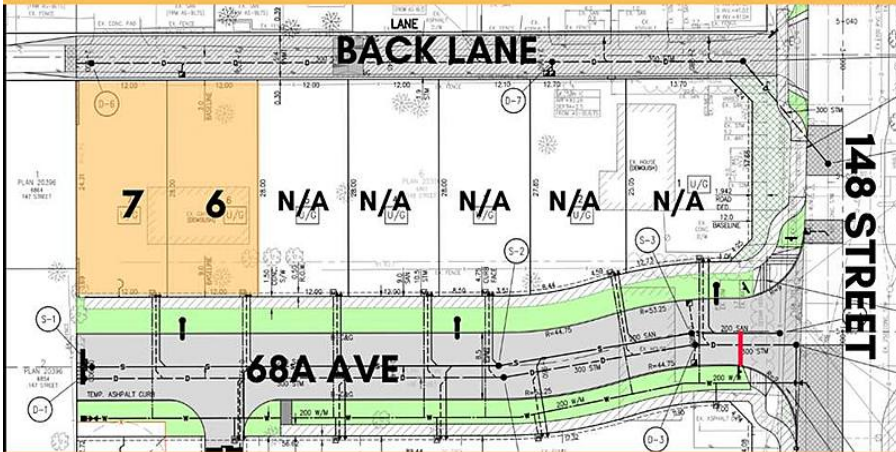


6851 148 Street, Surrey

\$1,025,000

LOTS FOR SALE

BUILD TO SUITE -APPROX. 3700 SF PLUS GARAGE



FULLY SERVICED RF-13 LOTS APPROX. 3600+ SF (40X92)

COMING IN FALL...CALL FOR DETAILS

OPPORTUNITY TO OWN SINGLE FAMILY LOTS IN EAST NEWTON! Lot 6 & 7 side by side are available. Located in a residential area on a quiet street with back lane access, Sizes for both lots are approx. 3600+ SQ Ft. can accommodate 2 storey with in ground basement house approx. 3700 + Garage. Close to elementary and high schools. Good transit access less than 5 minutes walk away, Newton Bus Stand, shopping, recreation facilities, seniors centre, library, medical clinics, Costco, pubs, and an array of restaurants are all close by. Please do NOT walk on the property without Listing Agent. Call For Details!!

KEY INFORMATION

MLS® R2559463

Land Only

East Newton

0 Bedrooms

0 Bathrooms

0 SF

3,600 SF Lot

FEATURES

Listed By: Sutton Group-Alliance R.E.S.

rennie