

# 239 Second Street, New Westminster

\$2,489,000



A Classic Modern Queen Anne design blending w/ heritage residences of Queen's Park. Stately & gracious, grand 2 level living without compromise in construction. Recent updates; new roof, 2 dual 50 gal. HW tanks & overhauled furnaces. Registered lower suite on 4'11" crawl for endless storage. Fine qualities are; solid oak flooring w/ mahogany borders, custom Marvin double hung wood windows, Chef's kitchen, breakfast bar, W/I pantry. Master suites offer W/I closets & 5 pc spa baths. Special features; circular tea room under turret roof accented w/stain glass window & a true formal Dining Room & 9'ceilings & A/C. Exterior features 50' of covered slate patios & hot tub, landscaped w/granite perimeter, extra height garages w/workshop & attic & outdoor surveillance. Steps to Queen's Park.

## KEY INFORMATION

MLS® R2559988

Residential Detached

Queen's Park

4 Bedrooms

4 Bathrooms

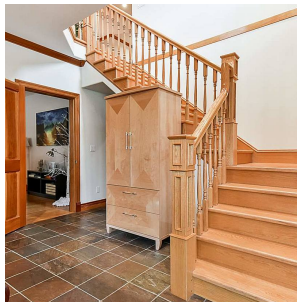
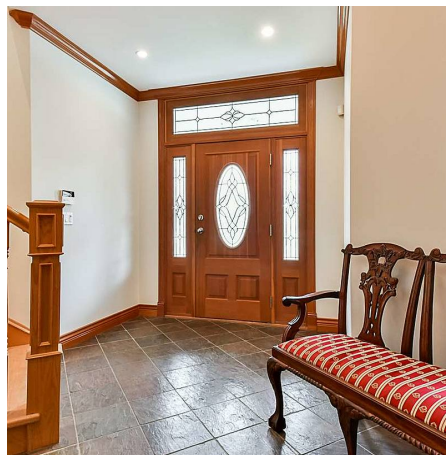
4,750 SF

8,712 SF Lot

## FEATURES

Year Built: 1997

Listed By: rennie & associates realty ltd.



**Matthew Lee**  
778.882.2673  
mlee@rennie.com  
rennie.com/matthewlee

**rennie**