

650 Clarke Road, Coquitlam

\$3,637,000



WEST COQUITLAM DEVELOPERS and INVESTORS - Currently zoned RT-1 and the Southwest Coquitlam Area Plan calls for medium density apartment. The lot totals approximately 9572 square feet. The land assembly totals approximately 43,526 square feet. Conveniently located in the Burquitlam Lougheed Neighbourhood Plan. New developments are being built and are proposed all around this property. Near the Burquitlam Skytrain Station, bus, schools, SFU, parks and shopping. The home is still livable making this a great holding property for investors. Measurements are approximate, buyer to verify if important. Call today for an information package.

KEY INFORMATION

MLS® R2559887

Residential Detached

Coquitlam West

3 Bedrooms

2 Bathrooms

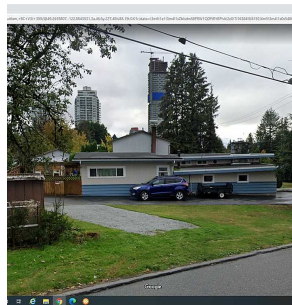
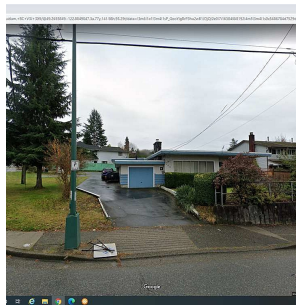
1,858 SF

9,572 SF Lot

FEATURES

Year Built: 1951

Listed By: RE/MAX Sabre Realty Group



rennie