

212 1345 Chesterfield Avenue, North Vancouver

\$349,000



Fabulous 1 bedroom at Chesterfield Manor in Central Lonsdale. Bright, spacious, South-facing and in immaculate condition! Nothing to do but move in, or renovate your dream space. Large rooms and sunny patio are a bonus and hot water heating is included in mainenance fee. Chesterfield Manor is an established, well-run building. Located one block off Lonsdale and just steps to the NV library, transit, shops, and restaurants. 1 dog or 1 cat allowed. No rentals allowed. 1 parking stall and 1 storage locker included. 35% down payment is required. Quick possession is available and easy to show anytime. Dont miss this opportunity!

KEY INFORMATION

MLS® R2561595

Residential Attached

Central Lonsdale

1 Bedroom

1 Bathroom

682 SF

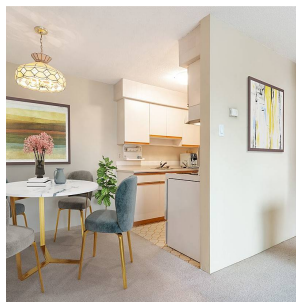
\$308.27 Maintenance Fees

FEATURES

Year Built: 1968

Views: BRIGHT SOUTH-FACING

Listed By: rennie & associates realty ltd.



Mike Ross
778.987.8874
mross@rennie.com
rennie.com/mikeros

rennie