

# 507 1135 Quayside Drive, New Westminster

\$579,900



Welcome to Anchor Point. This spacious 2bed/2bath 1129sq foot home in the heart of the Quay is now available. Features updated kitchen w/ quartz counter, S/S appliances, laminate flooring, newer washer & dryer, designer paint, updated bathrooms, cozy gas fireplace, and nice size balcony. Great SE mountain & river views. Well maintained building with new pipes, exercise room, party room. 1 parking and 1 locker included. Walk to public market, river walk, and skytrain. Rentals allowed, no pets allowed. Call or message me for more information.

## KEY INFORMATION

MLS® R2561593

Residential Attached

Quay

2 Bedrooms

2 Bathrooms

1,129 SF

\$672.35 Maintenance Fees

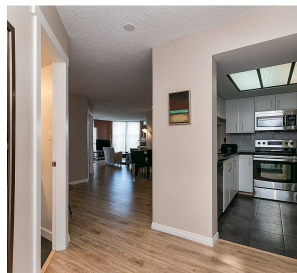


## FEATURES

Year Built: 1989

Views: FRASER RIVER AND MOUNTAIN

Listed By: rennie & associates realty ltd.



**Dal Milin** PREC\*  
778.881.9021  
dmilin@rennie.com  
rennie.com/dalmilin

**rennie**