

601 8280 Westminster Highway, Richmond

\$679,900



Welcome to Emerald Place! Immaculate 2 Bed + 2 Bath SW Corner home has the perfect floor plan. Spacious living room w/wood floors, corner gas f/p & floor to ceiling windows w/open views of landscaped gardens & city. Open the French doors to the bright & cheerful kitchen w/tons of counter space & cupboards for storage. Relax in the separated bdrms. The Mst bdrm w/ Lg walk-in closet 4pc ensuite w/ soaker tub, separate shower & Lg window for plenty of natural light. The second bdrm has a Lg wall-in closet w/adjacent 4 pc bath. Enjoy the outdoors in the lovely, landscaped garden below. Located in the heart of Richmond Centre, shopping for fresh groceries is easy w/Richmond Public Market right next door. Close to Richmond Centre, Skytrain & Kwantlen University. 2 parking incl!

KEY INFORMATION

MLS® R2563030

Residential Attached

Brighthouse

2 Bedrooms

2 Bathrooms

1,358 SF

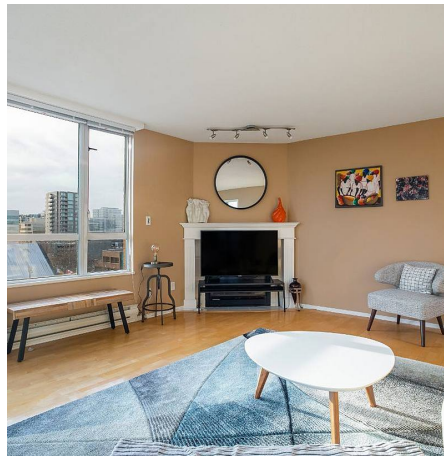
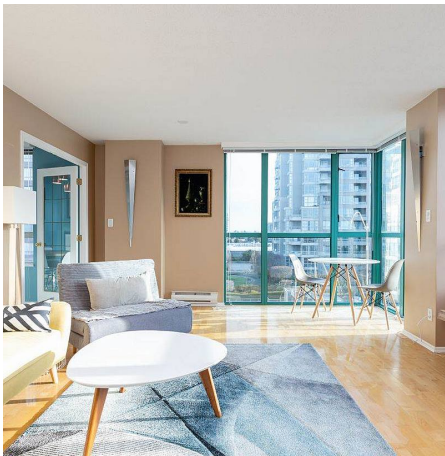
\$589.46 Maintenance Fees

FEATURES

Year Built: 1992

Views: CITY

Listed By: rennie & associates realty ltd.



Salina Kai PREC*
604.773.7013
skai@rennie.com
rennie.com/salinakai



Danny Chow PREC*
604.765.2469
dchow@rennie.com
rennie.com/dannychow

rennie