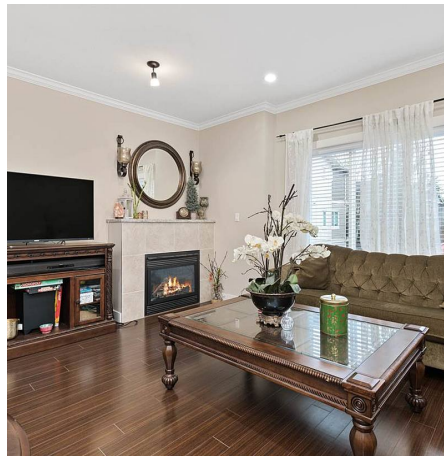


4 7051 Ash Street, Richmond

\$899,000



ARNAGE' sought after deluxe Townhouse in Central Richmond with bright & open floor plan, perfect for family. Conveniently located directly across from Garden City Park with tennis court & bike park. 4 generous sized bedrooms, 2.5 baths, the 4th bedroom on ground floor located in tandem garage area. 9' ceiling on main floor with rich dark laminate floor, balcony & large kitchen with nook. Extensive crown moulding & designer colour scheme, professional series S/S appliances, granite countertops in kitchen and all bathrooms. Very well maintained complex by pro active strata corp. Close to all level of schools & Kwantlen University, transit & Canada Line Skytrain station, Daycare Ctr & Richmond Ctr. School catchments :DeBeck Elementary, Palmer Secondary.

KEY INFORMATION

MLS® R2563337

Residential Attached

Mc Lennan North

4 Bedrooms

3 Bathrooms

1,345 SF

FEATURES

Year Built: 2011

Listed By: RE/MAX Westcoast

rennie