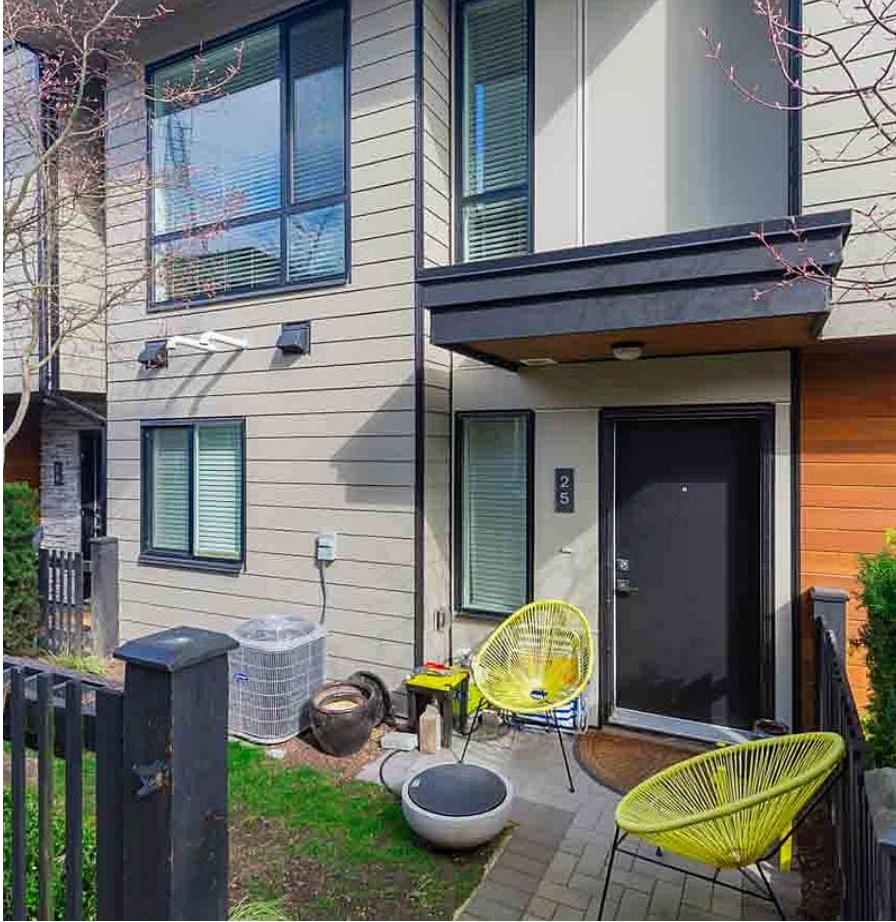


25 15688 28 Avenue, Surrey

\$968,000



Wow 4 Bedrooms 4 Bathrooms executive bright beautiful stylish 1912 sq foot Townhouse in Sakura. side-byside double car garage. Well-designed open concept on the main floor for the living, kitchen, and dining area. Crafted with fine details; Top ranking school catchment of Semiahmoo and just beside the BC famous private school South Ridge. Beautifully situated in the heart of South Surrey, with Oliver Park on one side and vibrant Morgan Crossing to the other. Private amenities building offers a fully equipped gym and more!

KEY INFORMATION

MLS® R2563493

Residential Attached

Grandview Surrey

4 Bedrooms

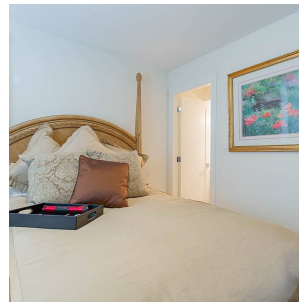
4 Bathrooms

1,912 SF

FEATURES

Year Built: 2015

Listed By: Nu Stream Realty Inc.



rennie