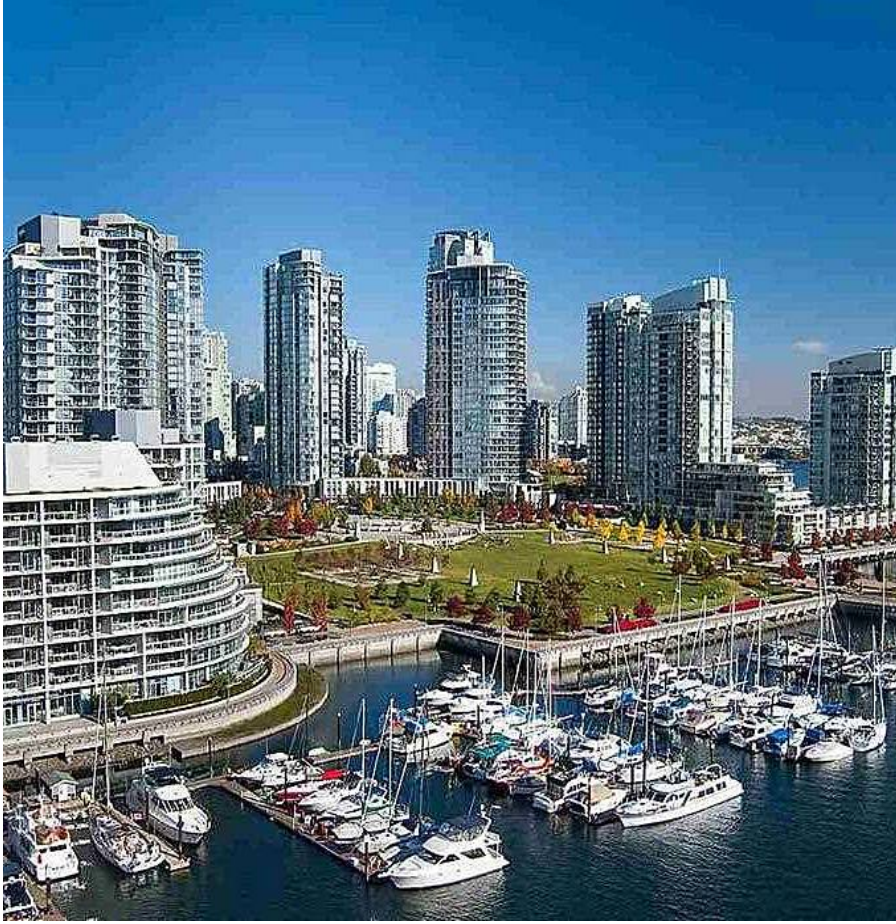


Th 106 633 Kinghorne Mews, Vancouver

\$2,598,000



Welcome to true waterfront living...Beautiful, sunny and quiet waterfront City Home in the prestigious Icon 2 located in the Beach Crescent neighborhood. Spacious 1650 sf floor plan on 2 levels, a large balcony off the Master with another large landscaped private patio facing the False Creek Seawall and Marina. Beautiful, modern finishing including hardwood flooring, S/S appliances, gas cook top, granite counters, gas fireplace with a gas outlet for your BBQ on the patio, and all year round air-conditioning. Club Oasis also has extensive facilities featuring a large indoor pool, gym, steam room, sauna, whirlpool, media room, party room and 24 hours concierge service. TWO PARKING STALLS and a storage locker also come with this home.

KEY INFORMATION

MLS® R2564603

Residential Attached

Yaletown

2 Bedrooms

3 Bathrooms

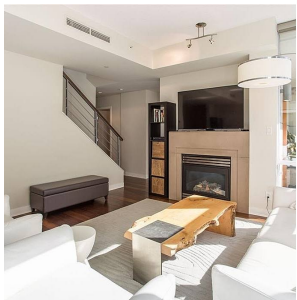
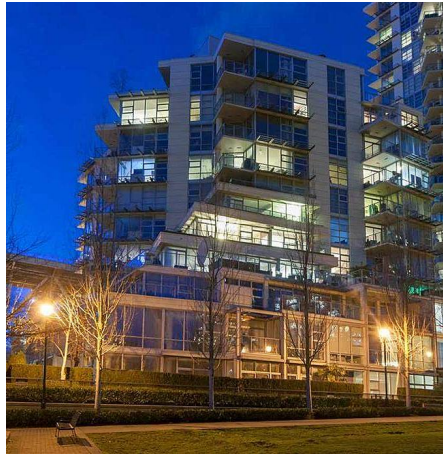
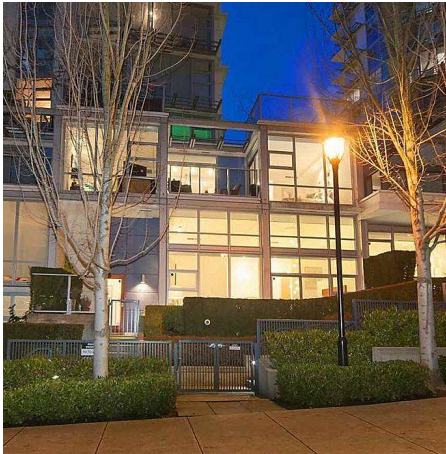
1,632 SF

FEATURES

Year Built: 2006

Views: WATER VIEW

Listed By: Macdonald Realty



rennie