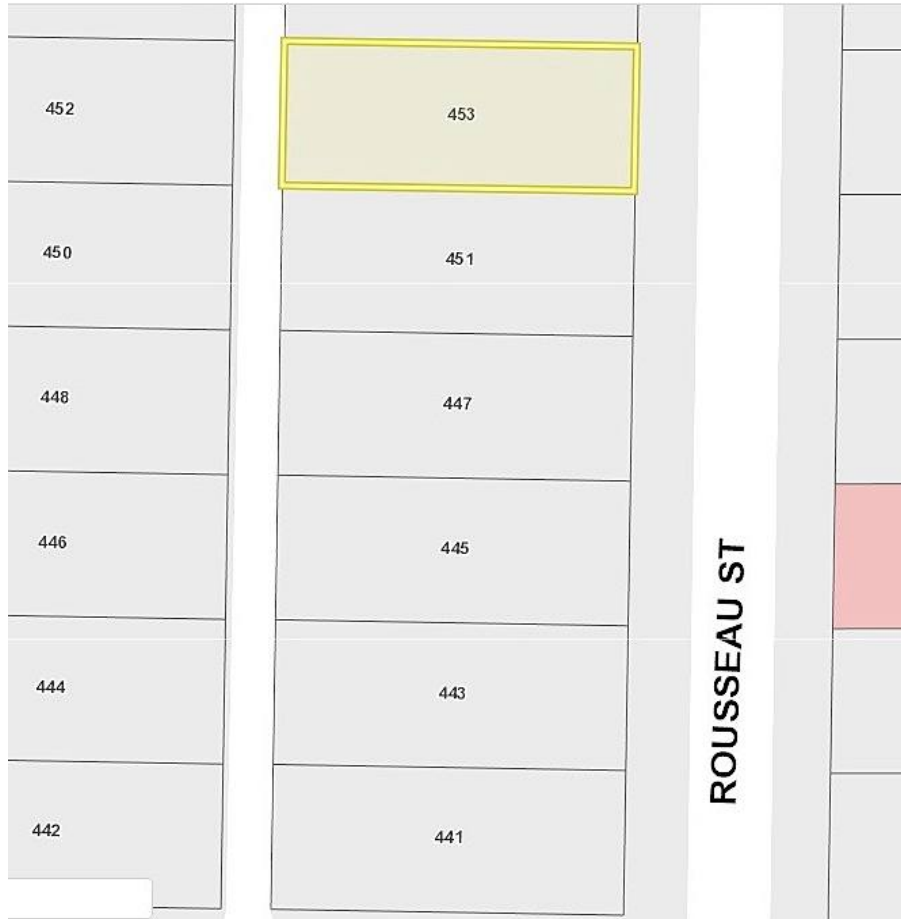


453 Rousseau Street, New Westminster

\$1,650,000



Investors/Developers! This is for you! Starting at the corner of Major & Rousseau and working your way towards Braid on the high side of the street is this potential land assembly totalling 6 lots and 30,648 s/f with lane access. This is one of the few small areas that will be receiving a new zoning designation for town/row homes, Du/Tri/Quadplex in the New West OCP. Designed to compliment and surround the Sapperton Green project which is sure to be the biggest local development project of our time. This soon to be bustling part of this vibrant neighbourhood is just waiting for new development. This is a fantastic opportunity to buy at a great price and hold with rent back potential if needed

KEY INFORMATION

MLS® R2564665

Residential Detached

Sapperton

4 Bedrooms

2 Bathrooms

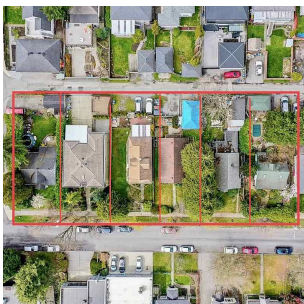
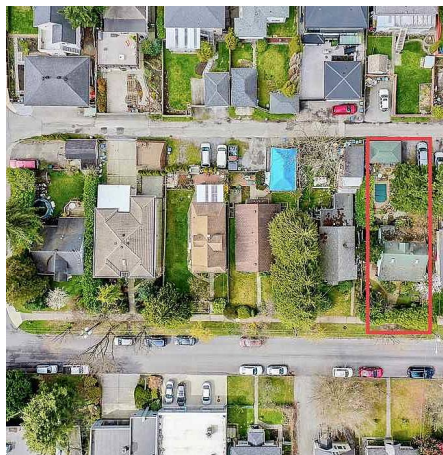
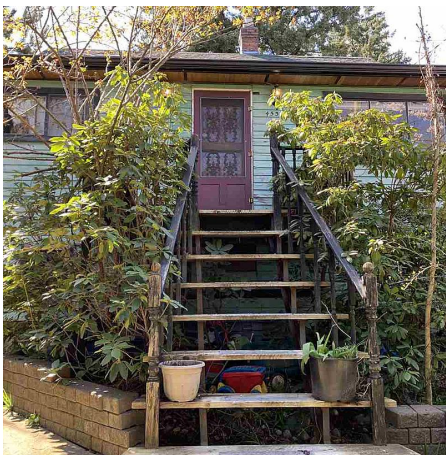
1,770 SF

5,108 SF Lot

FEATURES

Year Built: 1930

Listed By: Sutton Group-West Coast Realty



rennie