

3004 5665 Boundary Road, Vancouver

\$799,900



VIEWS VIEWS VIEWS!! High Level 2 Bed & Den & Flex at Wall Centre Central Park - Meticulously Kept unit features: floor to ceiling windows with views of Downtown, City and Mountains, OPEN CONCEPT Floor Plan with overheight 8'6 ceilings, laminate floors, updated ensuite shower stall, shaker-style cabinetry, grohe faucets, quartz/marble counters, and stainless steel appliances with liebherr fridge/gas Range. Amenities include: 2 fitness centre, pool, meeting rooms, caretaker and lush garden space with community garden. designed to meet LEED Gold Standards by award-winning gBL Architects. Close to SKYTRAIN and Central Park. TWO side-by-side EV eligible PARKING next to the elevator and OVERSIZE STORAGE LOCKER. OPEN HOUSE BY APPT – Sat Apr 17 + Sun Apr 18 2-4pm.

KEY INFORMATION

MLS® R2564733

Residential Attached

Collingwood

2 Bedrooms

2 Bathrooms

849 SF

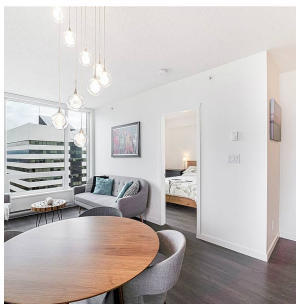
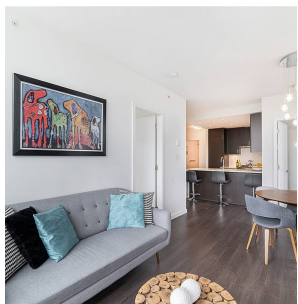
\$473.70 Maintenance Fees

FEATURES

Year Built: 2016

Views: AMAZING DOWNTOWN CITY & MTNS

Listed By: rennie & associates realty ltd.



Calvin Kan PREC*
604.616.8373
ckan@rennie.com
rennie.com/calvinkan

rennie