

2228 Burquitlam Drive, Vancouver

\$1,998,000



Well kept home by long time owner in the most PRESTIGIOUS FRASERVIEW LOCATION WITH PANORAMIC VIEW OF MOUNTAINS AND WATER! Spectacular solid custom-built European home. Enjoy walking into the grand foyer and catching a glimpse of the Fraser river. Home is equipped with security, speaker and sprinkler systems for your convenience. Comes with many extra features; skylight kitchen, stylish sunken living room, and 4 gas fireplaces with one even in the master bedroom, making it one of the coziest homes in this family oriented neighborhood! Sunny southern exposure back yard with a huge concrete patio overlooking Richmond and Fraser River. Virtual tour link: tinyurl.com/2ehx2y7j

KEY INFORMATION

MLS® R2565915

Residential Detached

Fraserview

5 Bedrooms

4 Bathrooms

3,789 SF

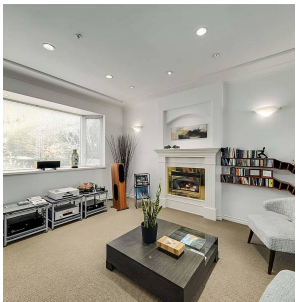
6,392 SF Lot

FEATURES

Year Built: 1993

Views: FRASER RIVER

Listed By: rennie & associates realty ltd.



Hanson Lu PREC*
604.787.2578
hlu@rennie.com
rennie.com/hansonlu

rennie