

402 2345 Rindall Avenue, Port Coquitlam

\$719,900



Introducing ALBA, a collection of 75 modern 1, 2 & 3 bedroom homes in the heart of Port Coquitlam - beautifully designed to enhance and inspire your living experience. Parkside location, thoughtful amenities, steps away from shopping, the new Recreation Center and West Coast Express. Interiors have a contemporary feel with welcoming accents drawn from Danish influences and natural materials. Perfectly suited for everyday cooking as well as entertaining, kitchens come equipped with quality appliances featuring gas ranges and counter-depth fridges. At least 1 Parking Stall and Bicycle Storage included. Rentals and Pets allowed. Estimated completion 2nd Half of 2022. Presentation Center open by appointment (#101-2264 Elgin Avenue, Port Coquitlam).

KEY INFORMATION

MLS® R2567484

Residential Attached

Central Port Coquitlam

3 Bedrooms

2 Bathrooms

1,132 SF

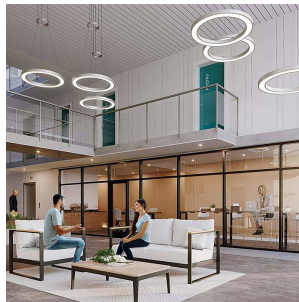
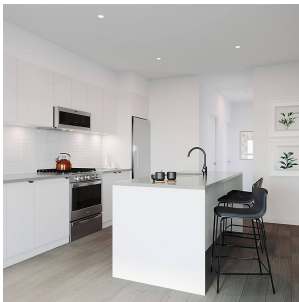
\$396.20 Maintenance Fees

FEATURES

Year Built: 2022

Views: Mountain

Listed By: Oakwyn Realty Ltd.



rennie