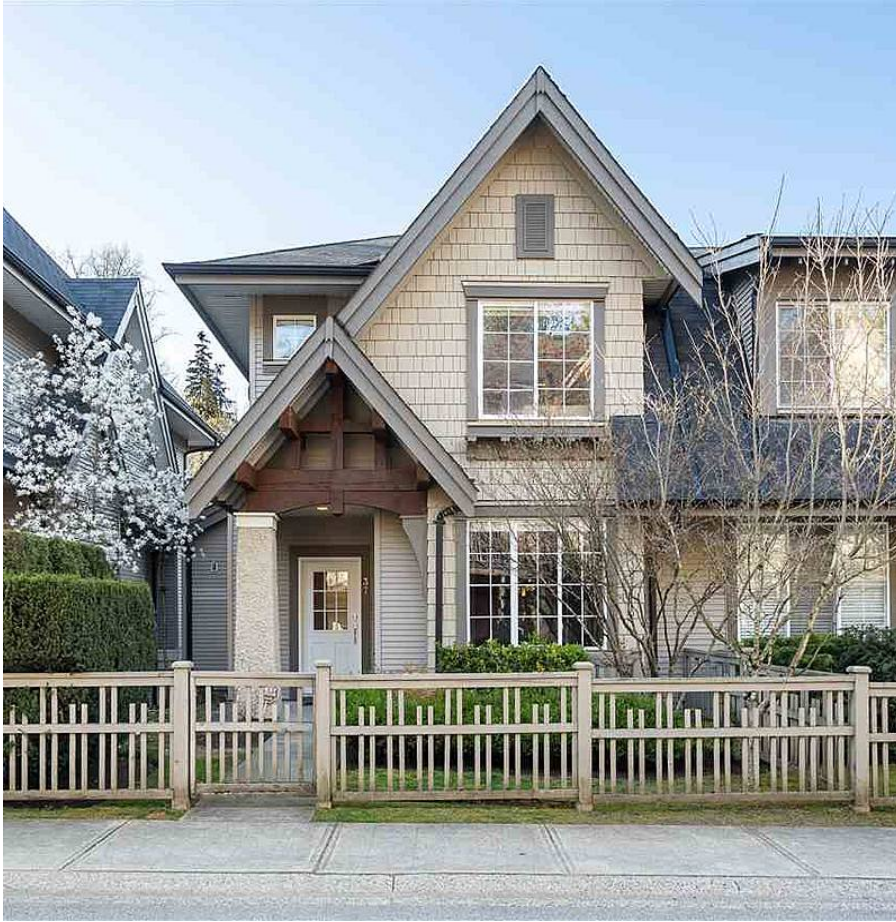


37 8415 Cumberland Place, Burnaby

\$999,900



ASHCROMBE BY POLYGON -Enjoy coming home to a large 1951 sqft 3 storey level townhome in a family- friendly oriented neighbourhood. This well maintained 4 bedroom features a fenced in front yard, double car attached garage, new balcony, tastefully reno'd bathrooms, 3 bedrooms upstairs and one on the bottom which can be used as flex, rec or office. Ample space for entertaining on main level with spacious living/ dining room. Kitchen provides access to the balcony perfect for enjoying outdoor space. Central location with quick access to Hwy 1 and Lougheed Hwy. Shopping within a 5 min drive to Lougheed Mall and many restaurants and amenities. Walking distance to Cariboo Hill Secondary and transit.

KEY INFORMATION

MLS® R2568571

Residential Attached

The Crest

4 Bedrooms

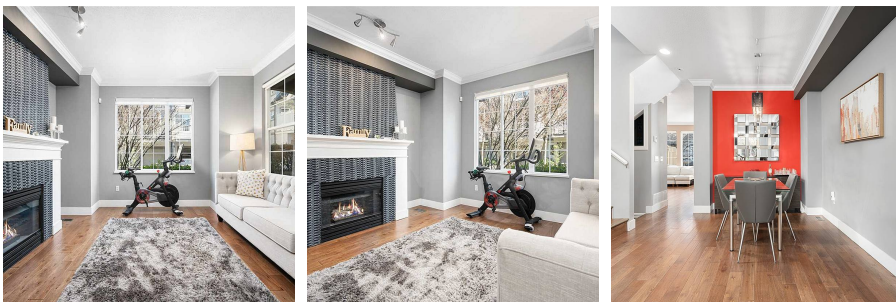
3 Bathrooms

1,951 SF

FEATURES

Year Built: 2000

Listed By: rennie & associates realty ltd.



Amy Chan
604.992.2101
achan@rennie.com
rennie.com/amychan

rennie