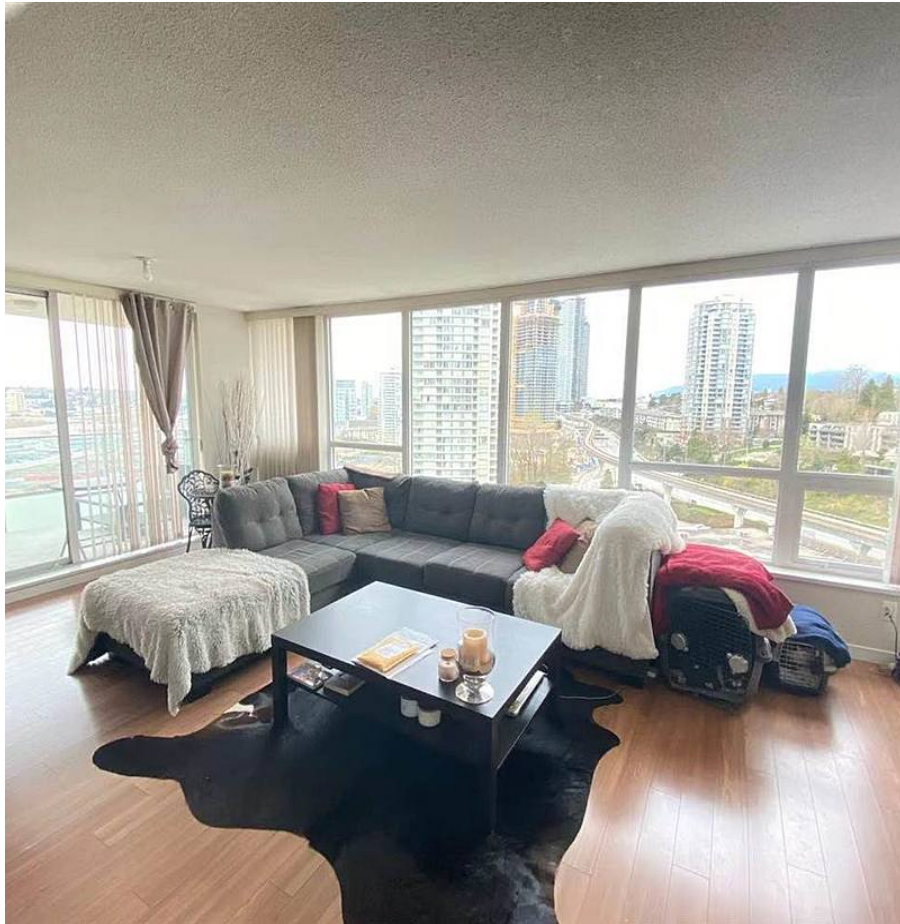


1503 2232 Douglas Road, Burnaby

\$890,000



Welcome to the Affinity by Bosa, quiet SW side. located in the heart of North Burnaby. This beautiful two bedroom, two bathroom + Den & Nook condo is spacious and bright with floor to ceiling windows, an open kitchen outfitted with granite countertops and stainless steel appliances. Generous sized Den is perfect for working home! Walking distance to Brentwood Mall and Holdom Skytrain Station. 2 parking stalls and locker! Tenants will move out in the middle of June

KEY INFORMATION

MLS® R2571490

Residential Attached

Brentwood Park

2 Bedrooms

2 Bathrooms

1,067 SF

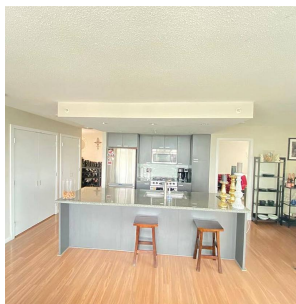
\$503.30 Maintenance Fees

FEATURES

Year Built: 2012

Views: City View

Listed By: Sincere Real Estate Services



rennie