

# 12331 Gilbert Road, Richmond

\$6,000,000



Imagine living on a farm in the city! 12331 Gilbert Rd is just 10 min drive: North to all the hustle and bustle around Richmond Centre, West to historic Steveston Village, East to access Hwy 99 to Vancouver/Delta/Surrey. This 10 acre farmland is a rare find with 353 sf frontage, it awaits your plan to build your dream family home, grow crops and enjoy life. \*great month to month tenants, please do not walk on the property without authorization.\* video: <https://youtu.be/8QhTNNRfqMw>

## KEY INFORMATION

MLS® R2571630

Residential Detached

Gilmore

2 Bedrooms

2 Bathrooms

1,078 SF

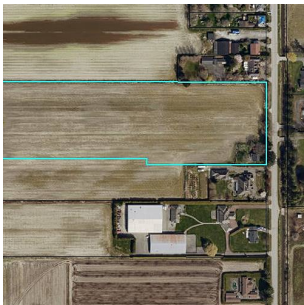
435,600 SF Lot

## FEATURES

Year Built: 1927

Views: Farmland

Listed By: RE/MAX Westcoast



rennie