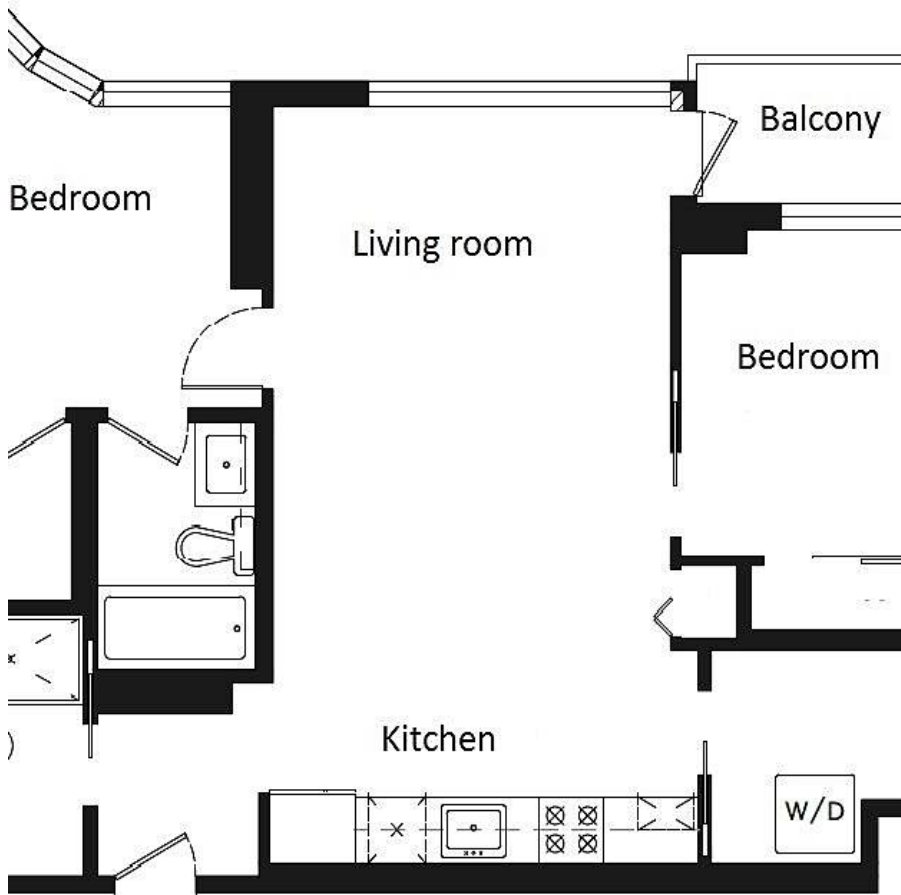


651 38 Smithe Street, Vancouver

\$1,079,000



Award winning "One Pacific" recently completed by Concord One Pacific in Yaletown. South exposure unit featuring 2 beds, 2 bath and a den with a direct view of False Creek water and Olympic Village from every room. In-suite features include 90' ceilings, Miele appliances, central air conditioning/heating, marble tiles in washroom, engineered hardwood flooring and high end faucets. Luxury resort style amenities including outdoor pool area, hot tub, party room, roof top garden and 24 hour concierge. Walking distance to Seawall, Coffee shops, Parq Vancouver, Skytrain/transit stations, Rogers Arena, Costco and Yaletown bars and restaurants. Gas, Heat, & Hot Water included in condo fees.

KEY INFORMATION

MLS® R2571655

Residential Attached

Downtown

2 Bedrooms

2 Bathrooms

812 SF

\$523.42 Maintenance Fees

FEATURES

Year Built: 2016

Views: City

Listed By: Sutton Group-West Coast Realty



rennie