

2311 Burquitlam Drive, Vancouver

\$1,999,900



Well kept home in the most PRESTIGIOUS FRASERVIEW LOCATION with BREATH TAKING VIEWS OVERLOOKING RICHMOND! Spectacular solid custom-built home on a huge 6226 sqft lot on the high side of the street. South facing home with very bright & sunny interiors, spacious & open concept floor plan offering a comfortable and elegant living space. Upstairs has 4 bedrooms & 3 bath rooms for your growing family. Enjoy views from southern balcony off master bdrm, and the warm rays of the sun from the beautiful Solarium room off family room. Below floor has a spacious 2 bedroom suite for your mortgage helper. MOVE IN READY: main floor and upstairs freshly painted! Quick possession possible! Walking distance to schools, Fraserview Golf Course, and Bobolink Park. BONUS: rare find triple car garage!

KEY INFORMATION

MLS® R2572597

Residential Detached

Fraserview

6 Bedrooms

5 Bathrooms

3,959 SF

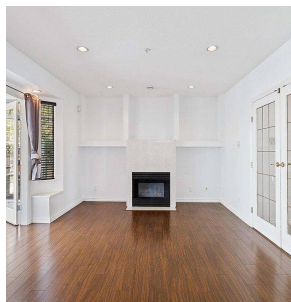
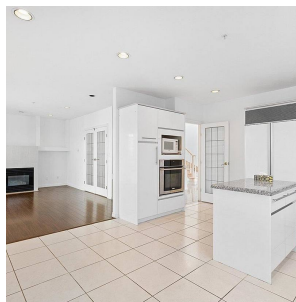
6,226 SF Lot

FEATURES

Year Built: 1993

Views: Richmond, Fraser river

Listed By: rennie & associates realty ltd.



Hanson Lu PREC*
604.787.2578
hlu@rennie.com
rennie.com/hansonlu

rennie