

101 2815 Yew Street, Vancouver

\$988,000



GREAT LOCATION/EXCELLENT INVESTMENT OPPORTUNITY/FABULOUS HOME!! Steps to Arbutus Greenway, Connaught Park & Kits Comm Ctr, a block to future Broadway Skytrain Stn, & easy walking distance to boutiques & restaurants of West 4th & South Granville, this spacious unit feels more like a house with no common shared walls. Located on the quiet side of the building with sunny South exposure, overlooking the gardens, & offers direct access to L-shaped patio. The open kitchen, living room & dining room is bathed in light & features wide plank engineered hardwood throughout. Master BR easily fits a king bed, with ensuite & sliding door access to terrace, large 2nd BR on the opposite side with California Closet built ins. Gas f/p, pet-friendly, includes locker & 2 parking. Ample room for home office.

KEY INFORMATION

MLS® R2572796

Residential Attached

Kitsilano

2 Bedrooms

2 Bathrooms

1,216 SF

\$687.01 Maintenance Fees

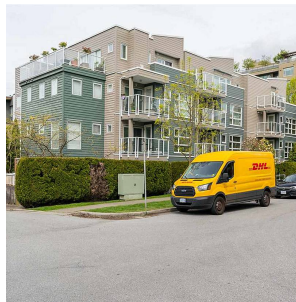
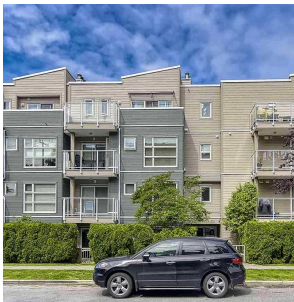
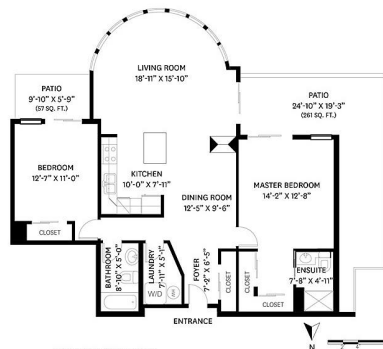
FEATURES

Year Built: 1992

Listed By: rennie & associates realty ltd.



MAIN FLOOR TOTAL: 1,216 SQ. FT.
PATIO: 318 SQ. FT.



Phil Chang PREC*
604.754.6678
pchang@rennie.com
rennie.com/philchang

rennie