

309 23233 Gilley Road, Richmond

\$614,500



Welcome to HAMILTON VILLAGE. This 2 bedroom, 2 bath plus den offers high ceilings, spacious layout, state of the art integrated appliances with quartz countertops, gas range, and large windows with views of the city. A master planned community in Richmond, located near Queensborough, New Westminster with shopping, community centre, schools, and parks are all a stone throw away. Convenient location just steps to transit that gets you to the EXPO LINE SKYTRAIN to downtown or Tri-Cities. Easy access to Hwy 91, Alex Fraser, Knight & Queensborough Bridges, and Airport. Walking distance to Fraser River trails, perfect for evening strolls or bike rides. Home comes with 1 parking and 1 locker.

KEY INFORMATION

MLS® R2573267

Residential Attached

Hamilton

2 Bedrooms

2 Bathrooms

847 SF

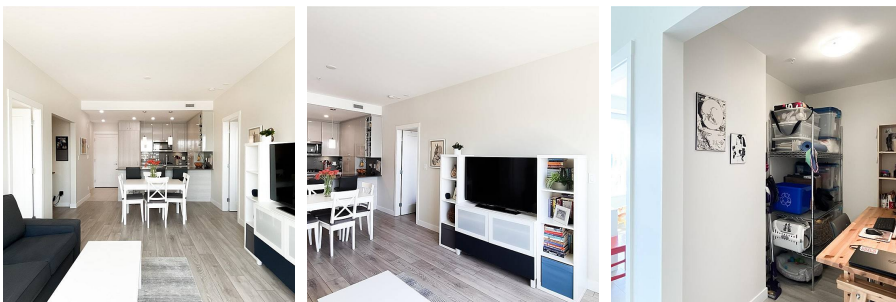
\$449.57 Maintenance Fees

FEATURES

Year Built: 2020

Views: MOUNTAIN

Listed By: Macdonald Realty



rennie