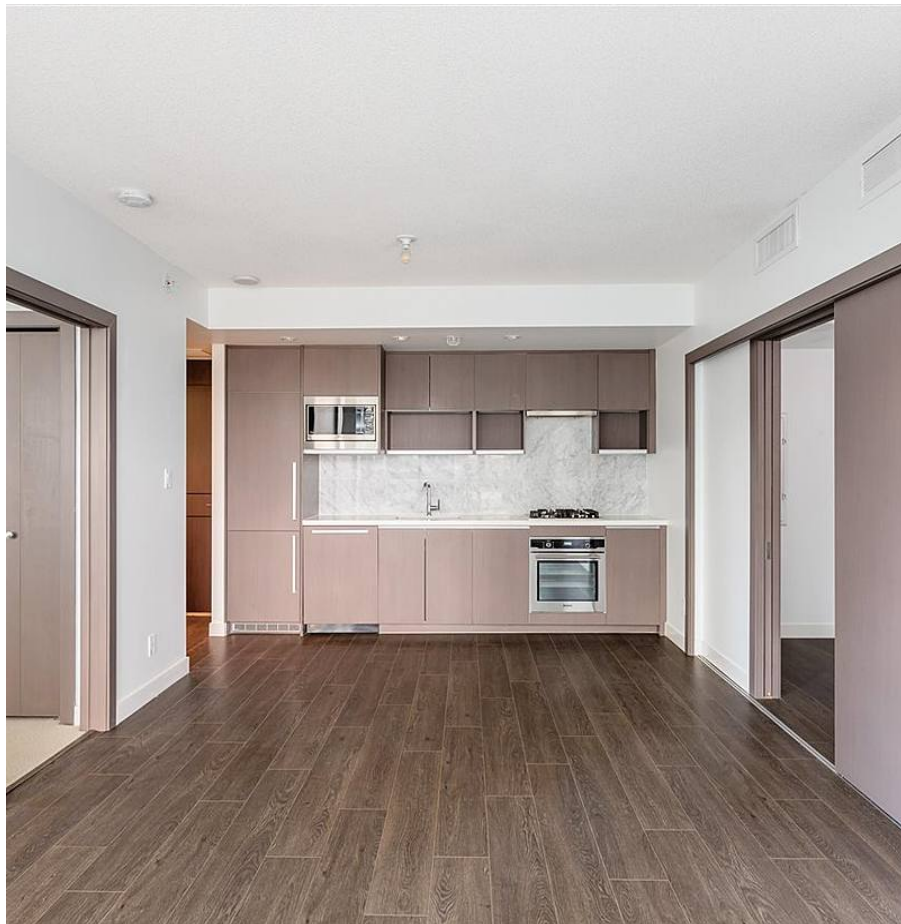


1515 68 Smithe Street, Vancouver

\$718,000



High floor one bedroom and den at ONE PACIFIC by Concord Pacific! Forever unobstructed city views with peak-a-boo water views. This home offers air-conditioning, open and efficient layout, wide plank engineered hardwood flooring with marble throughout. Enjoy the integrated MIELE appliances soft/close cabinetry, under-mount sinks & Quartz stone counter-tops. Benefit from 24 hr Concierge services & many CLUB ONE features such as its cantilever glass outdoor heated pool, hot tub, sauna/steam room, Sky Garden level community gardens, outdoor kitchen & fire pit and barbecue. The ideal home or investment in an exceptional location steps from the Seawall and Robson Street Destination. 1 parking and 1 locker included.

KEY INFORMATION

MLS® R2573459

Residential Attached

Downtown

1 Bedroom

1 Bathroom

515 SF

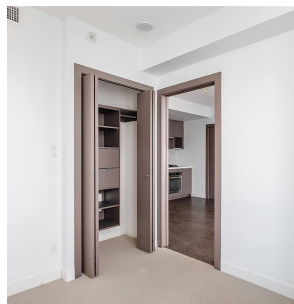
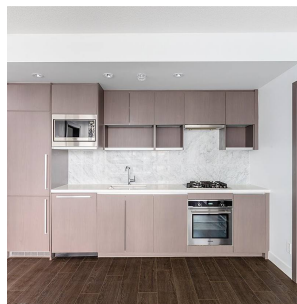
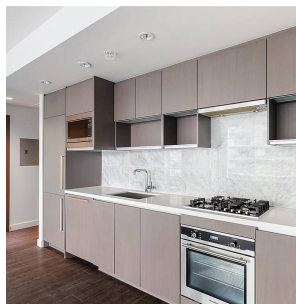
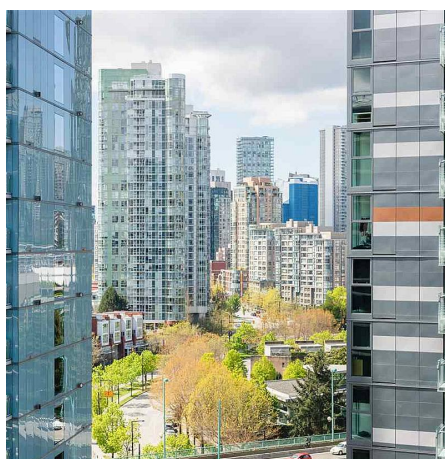
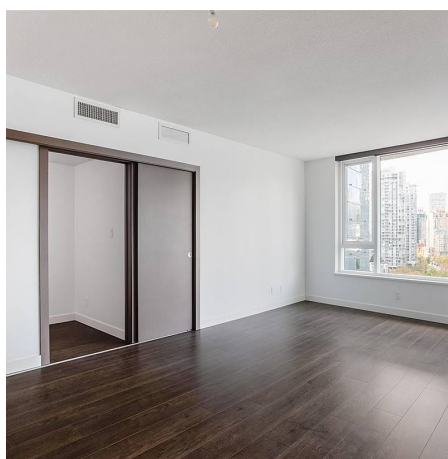
\$346.90 Maintenance Fees

FEATURES

Year Built: 2016

Views: WATER, CITY

Listed By: rennie & associates realty ltd.



Simon Lai PREC*
778.881.3603
slai@rennie.com
rennie.com/simonlai

rennie