

# 3510 9888 Cameron Street, Burnaby

\$719,900



Welcome to Silhouette Towers in a vibrant transforming Burnaby Lougheed area. This meticulously maintained large 2 bed home, occupied by the original owners, is perched atop the 35th floor with stunning panoramic North-East views of Mt. Baker, N. Shore Mountains, Fraser River, and Vancouver Golf Course. An ideal floor plan featuring a chef's kitchen with S/S appliances, gas range, open & airy living areas, renovated laminate throughout and spacious bedrooms both with ensuites & corner windows. Superbly convenient location with Northgate Village (Save-On-Foods, BCL, Tim Hortons, TD Bank) below at your doorsteps and minutes away to the skytrain, Hwy 1 access, Lougheed Mall, restaurants, retail and more. Your new dream home awaits, watch the video tour & book your private viewing appointment.

## KEY INFORMATION

MLS® R2573965

Residential Attached

Sullivan Heights

2 Bedrooms

2 Bathrooms

962 SF

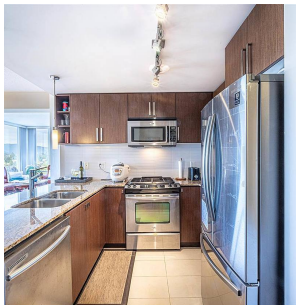
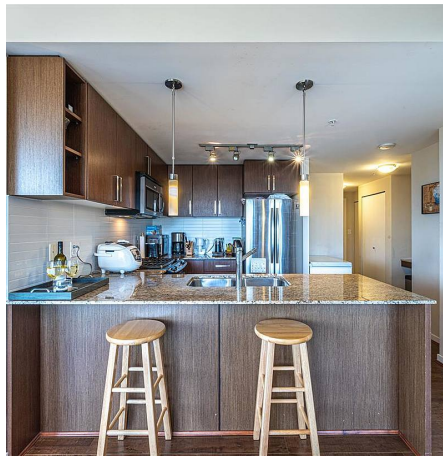
\$341.23 Maintenance Fees

## FEATURES

Year Built: 2009

Views: MTN, CITY, RIVER, GOLF COURSE

Listed By: rennie & associates realty ltd.



**Calvin Jiang**  
604.961.1698  
cjiang@rennie.com  
rennie.com/calvinjiang

**rennie**