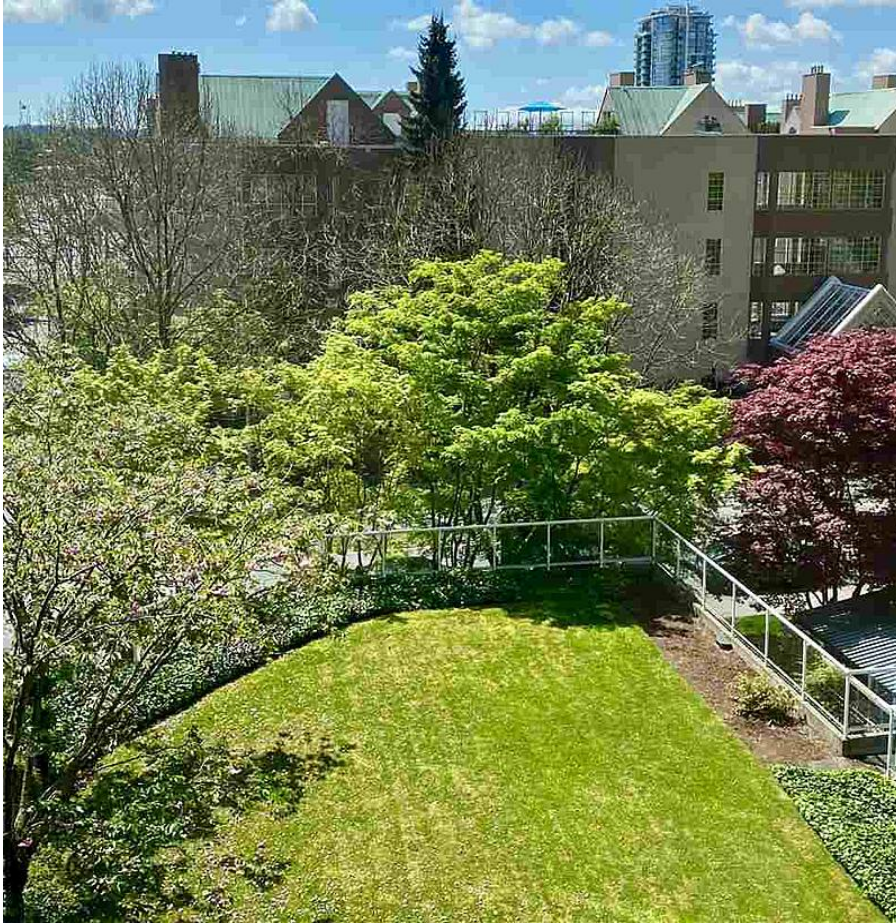


# 402 1135 Quayside Drive, New Westminster

\$650,000



Centrally located in the Heart of New Westminster Quay. This 3 BEDROOM 2 BATHROOM (1348 SQFT) open concept floorplan unit includes many features such as; 2 BALCONIES, 1 SECURE PARKING, STORAGE UNIT, 5K INTERNET, Gas Fireplace. Rentals Allowed. Pets NOT Allowed. The Building has a full time caretaker, indoor recreation facility, Sauna and wheelchair access. Plenty of additional parking and visitor parking. 5 Minute walk to Skytrain station and shopping. 8 Minute walk to downtown New Westminster. Beautiful Quay Boardwalk across the street. Total SQFT (1490) Strata Plan

## KEY INFORMATION

MLS® R2575502

Residential Attached

Quay

3 Bedrooms

2 Bathrooms

1,348 SF

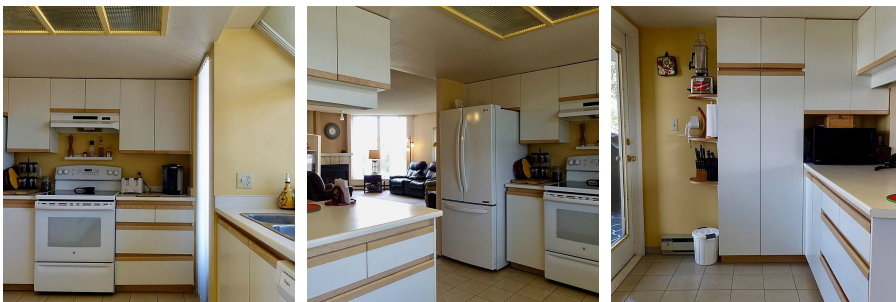
\$802.46 Maintenance Fees

## FEATURES

Year Built: 1989

Views: Beautiful Quayside

Listed By: Sutton Group-West Coast Realty



rennie