

103 2733 Atlin Place, Coquitlam

\$549,000



Ideal layout with bedrms on either side for privacy. A spacious 2 bedroom, 2 bath condo that feels like a house! Bonus den / 3rd bedrm for guests or an office. Livingrm is spacious, lovely gas fireplace & boasts a wall of windows which opens to a great patio & treed area - perfect for entertaining or pets. Easy access to Hwy #1 & Lougheed Hwy, transit, shopping, Mundy Park trails & all amenities.

KEY INFORMATION

MLS® R2576304

Residential Attached

Coquitlam East

2 Bedrooms

2 Bathrooms

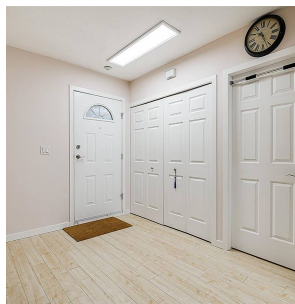
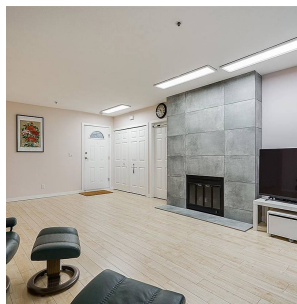
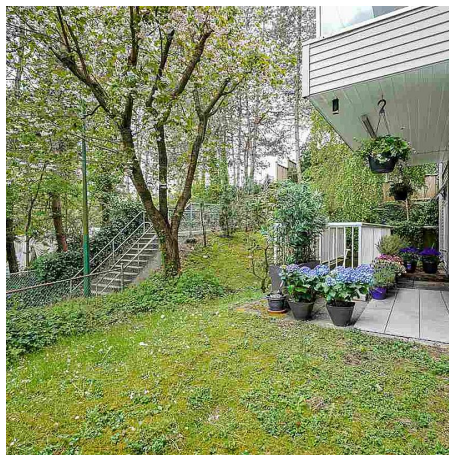
1,160 SF

\$410.85 Maintenance Fees

FEATURES

Year Built: 1989

Listed By: Royal First Realty



rennie