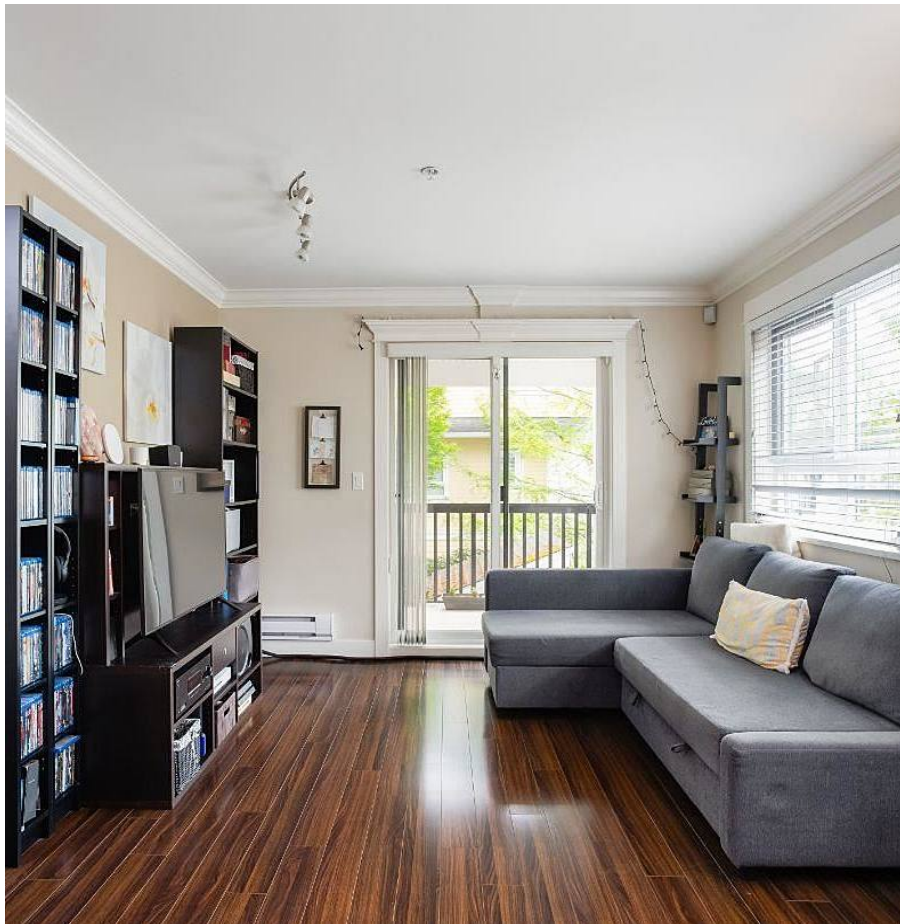


# 3 1130 Ewen Avenue, New Westminster

\$799,900



Welcome home to Gladstone Park. You're going to love this Craftsman style 3 Bdrm + Den + 2.5 Bath NW Corner 2 Level Townhome. Walk through the lovely pathway to find this perfect family home w/ endless patio space, spacious living areas w/ over-height ceilings, lots of windows for plenty of natural light & air flow. Enjoy quality time in the separated livrm & dinrm w/ laminate floors leading to a Lg covered deck. Gather in the gourmet kitchen w/ stainless steel appliances, thick granite countertops & shaker style cabinets. Upstairs is 3 Lg bdrms, 2 full baths & generous sized sundecks off 2 bdrms. Conveniently located close to shopping, only approx 20 mins to YVR & 30 mins downtown. Walking distance to Q.E.Elementary, Queensbury Community Ctr & Ryall Park. 1 Single garage incl.

## KEY INFORMATION

MLS® R2576654

Residential Attached

Queensborough

3 Bedrooms

3 Bathrooms

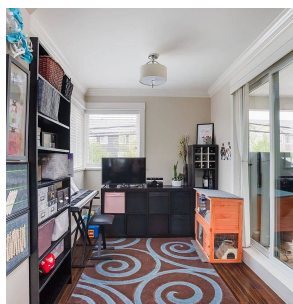
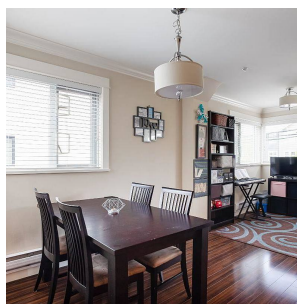
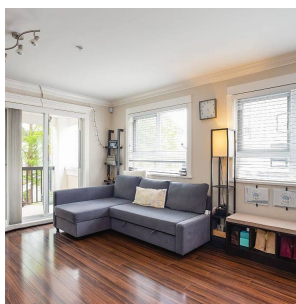
1,453 SF

## FEATURES

Year Built: 2011

Views: CITY & MOUNTAINS

Listed By: rennie & associates realty ltd.



**Salina Kai** PREC\*  
604.773.7013  
skai@rennie.com  
rennie.com/salinakai



**Danny Chow** PREC\*  
604.765.2469  
dchow@rennie.com  
rennie.com/dannychow

**rennie**