

# 910 9888 Cameron Street, Burnaby

\$679,900



A corner 2 bedroom 2 bathroom unit at Silhouette, located at the heart of Burquitlam. This corner unit is facing North East with an unobstructed view of the mountains, city and courtyard but still quiet. Laminated floor throughout the living area and a large balcony. Steps away to Lougheed Mall, restaurants, transits and shopping. This unit comes with 1 parking & 1 storage.

## KEY INFORMATION

MLS® R2577251

Residential Attached

Sullivan Heights

2 Bedrooms

2 Bathrooms

955 SF

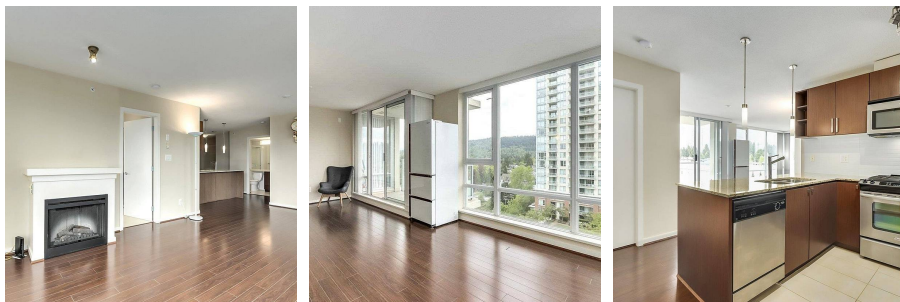
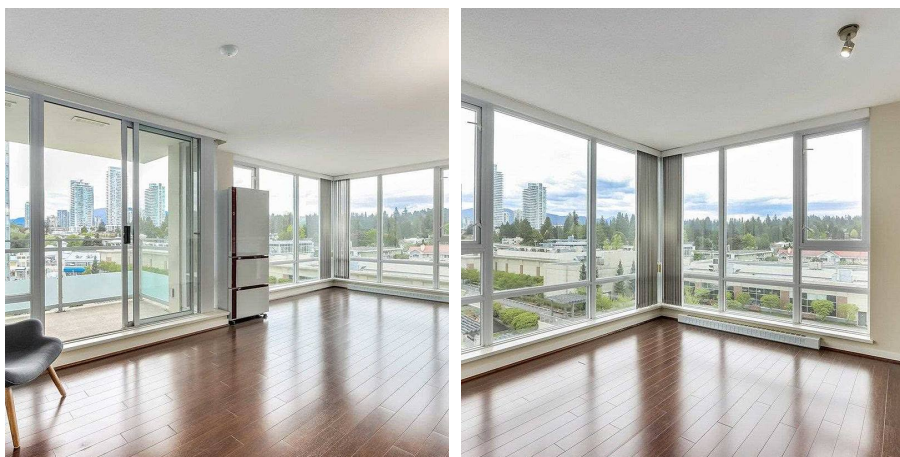
\$341.23 Maintenance Fees

## FEATURES

Year Built: 2009

Views: COURTYARD AND CITY

Listed By: rennie & associates realty ltd.



**Charlie Kim** PREC\*  
604.767.1531  
ckim@rennie.com  
rennie.com/charliekim

**rennie**