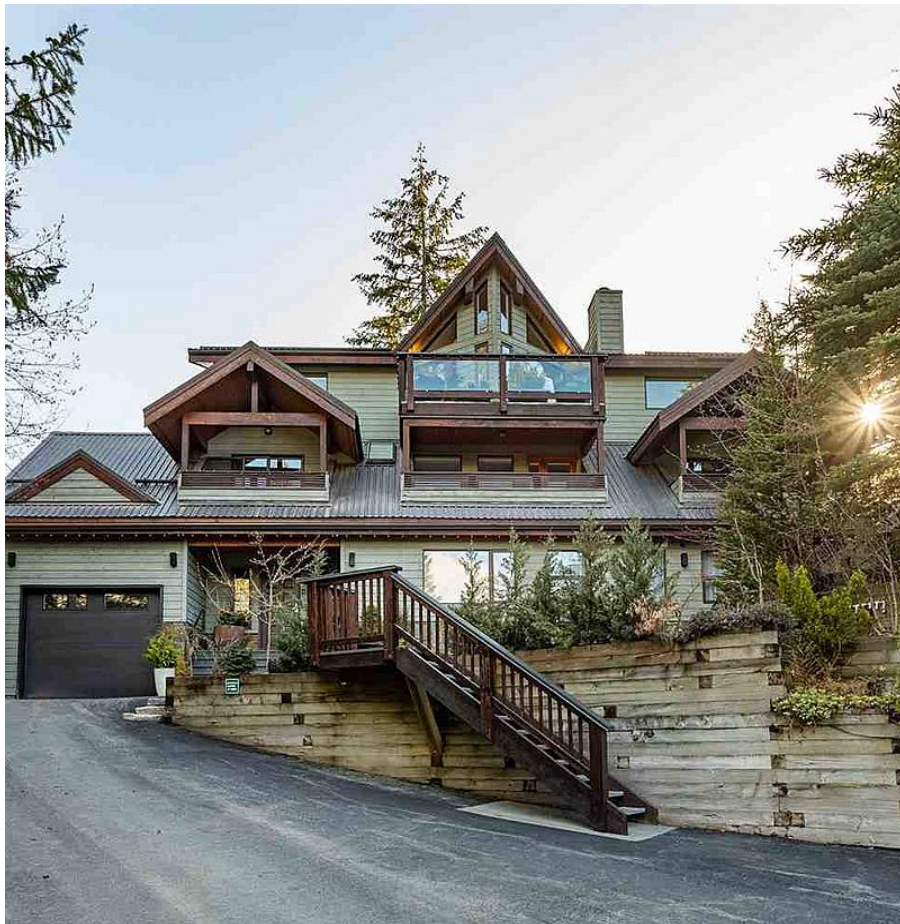


3137 Hawthorne Place, Whistler

\$4,999,000



Revel in expansive views from the perched positioning of this conveniently located residence just a short stroll from Whistler Village. All day sun fills the open plan living area designed to maximize endless mountain views, while the expansive sun-drenched outdoor living area with hot tub and large lawn offers exceptional privacy with the sounds of Alder Creek creating the perfect mountain ambience. The functional layout provides ample space to entertain friends and accommodate extended visits with six spacious bedrooms and a flexible floor plan that can be easily configured to allow for a one or two bedroom suite. Located on a quiet cul-de-sac in the popular Brio neighbourhood, enjoy the charm of this residence all within close proximity of everything Whistler has to offer.

KEY INFORMATION

MLS® R2577804

Residential Detached

Brio

6 Bedrooms

4 Bathrooms

3,500 SF

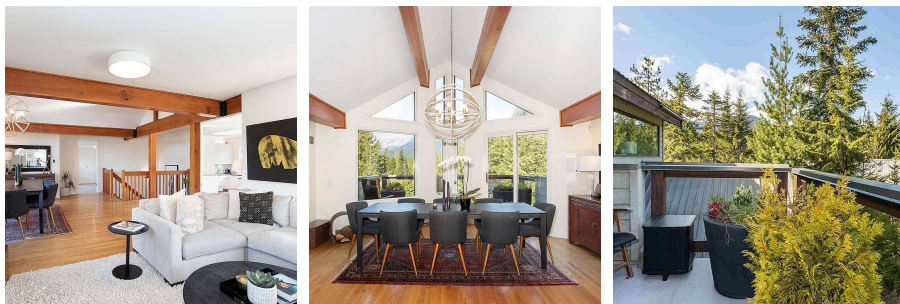
13,338 SF Lot

FEATURES

Year Built: 1993

Views: Wedge Mountain

Listed By: Whistler Real Estate Company Limited



rennie