

1207 7088 18th Avenue, Burnaby

\$735,000



Park 360 by Cressey. Unit Southeast Facing, great un-blocked view of Fraser River and MT baker. 869 sqft, 2 bed 2 bath. 2 side-by-side parking and 1 storage locker. Great un-blocked SE 270 degree View. 9' ceiling height, 3 elevators. 3 minutes walking distance to Sky-train Station, 30 minutes skytrain to downtown Vancouver. close to Highgate shopping mall. Taylor park elementary Catchment. Unit can only show if received offer subject to view. Seller plans to move out in about 2 months.

KEY INFORMATION

MLS® R2578370

Residential Attached

Edmonds

2 Bedrooms

2 Bathrooms

871 SF

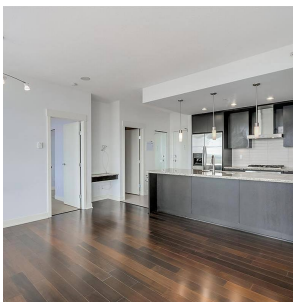
\$341.02 Maintenance Fees

FEATURES

Year Built: 2007

Views: Fraser River, Mt. Baker

Listed By: Sutton Group - 1st West Realty



rennie